

# ACAT1 Antibody (C-term)

Purified Rabbit Polyclonal Antibody (Pab)  
Catalog # AP20741c

## Product Information

---

<b>Application</b>	WB, E
<b>Primary Accession</b>	<a href="#">P24752</a>
<b>Reactivity</b>	Human, Rat
<b>Host</b>	Rabbit
<b>Clonality</b>	Polyclonal
<b>Isotype</b>	Rabbit IgG
<b>Clone Names</b>	RB50055

## Additional Information

---

<b>Other Names</b>	Acetyl-CoA acetyltransferase, mitochondrial, Acetoacetyl-CoA thiolase, T2, ACAT1, ACAT, MAT
<b>Target/Specificity</b>	This ACAT1 antibody is generated from a rabbit immunized with a KLH conjugated synthetic peptide between 393-426 amino acids from the C-terminal region of human ACAT1.
<b>Dilution</b>	WB~~1:1000 E~~Use at an assay dependent concentration.
<b>Format</b>	Purified polyclonal antibody supplied in PBS with 0.09% (W/V) sodium azide. This antibody is purified through a protein A column, followed by peptide affinity purification.
<b>Storage</b>	Maintain refrigerated at 2-8°C for up to 2 weeks. For long term storage store at -20°C in small aliquots to prevent freeze-thaw cycles.
<b>Precautions</b>	ACAT1 Antibody (C-term) is for research use only and not for use in diagnostic or therapeutic procedures.

## Protein Information

---

### Background

---

Plays a major role in ketone body metabolism.

### References

---

Fukao T.,et al.J. Clin. Invest. 86:2086-2092(1990).  
Kano M.,et al.Gene 109:285-290(1991).

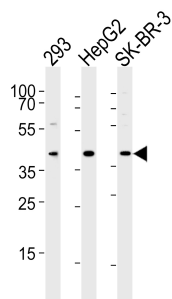
Ota T.,et al.Nat. Genet. 36:40-45(2004).

Mural R.J.,et al.Submitted (JUL-2005) to the EMBL/GenBank/DDBJ databases.

Aboulaich N.,et al.Biochem. J. 383:237-248(2004).

## Images

---



Western blot analysis of lysates from 293, HepG2, SK-BR-3 cell line (from left to right), using ACAT1 Antibody (C-term)(Cat. #AP20741c). AP20741c was diluted at 1:1000 at each lane. A goat anti-rabbit IgG H&L(HRP) at 1:5000 dilution was used as the secondary antibody. Lysates at 35ug per lane.

Please note: All products are 'FOR RESEARCH USE ONLY. NOT FOR USE IN DIAGNOSTIC OR THERAPEUTIC PROCEDURES'.