

GP1BA(Glycocalicin) Antibody (Center)

Purified Rabbit Polyclonal Antibody (Pab)

Catalog # AP20720c

Product Information

| | |
|--------------------------|------------------------|
| Application | WB, E |
| Primary Accession | P07359 |
| Reactivity | Human |
| Host | Rabbit |
| Clonality | Polyclonal |
| Isotype | Rabbit IgG |
| Clone Names | RB49575 |
| Calculated MW | 71540 |

Additional Information

| | |
|---------------------------|--|
| Gene ID | 2811 |
| Other Names | Platelet glycoprotein Ib alpha chain, GP-Ib alpha, GPIb-alpha, GPIbA, Glycoprotein Ibalpha, Antigen CD42b-alpha, CD42b, Glycocalicin, GP1BA |
| Target/Specificity | This GP1BA(Glycocalicin) antibody is generated from a rabbit immunized with a KLH conjugated synthetic peptide between 344-378 amino acids from the Central region of human GP1BA(Glycocalicin). |
| Dilution | WB~~1:1000 E~~Use at an assay dependent concentration. |
| Format | Purified polyclonal antibody supplied in PBS with 0.09% (W/V) sodium azide. This antibody is purified through a protein A column, followed by peptide affinity purification. |
| Storage | Maintain refrigerated at 2-8°C for up to 2 weeks. For long term storage store at -20°C in small aliquots to prevent freeze-thaw cycles. |
| Precautions | GP1BA(Glycocalicin) Antibody (Center) is for research use only and not for use in diagnostic or therapeutic procedures. |

Protein Information

| | |
|--------------------------|---|
| Name | GP1BA |
| Function | GP-Ib, a surface membrane protein of platelets, participates in the formation of platelet plugs by binding to the A1 domain of vWF, which is already bound to the subendothelium. |
| Cellular Location | Membrane; Single-pass type I membrane protein. |

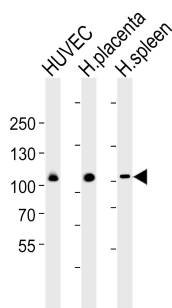
Background

GP-Ib, a surface membrane protein of platelets, participates in the formation of platelet plugs by binding to the A1 domain of vWF, which is already bound to the subendothelium.

References

Lopez J.A.,et al.Proc. Natl. Acad. Sci. U.S.A. 84:5615-5619(1987).
Wenger R.H.,et al.Biochem. Biophys. Res. Commun. 156:389-395(1988).
Matsubara Y.,et al.Thromb. Haemost. 87:867-872(2002).
Matsubara Y.,et al.J. Thromb. Haemost. 1:2198-2205(2003).
Titani K.,et al.Proc. Natl. Acad. Sci. U.S.A. 84:5610-5614(1987).

Images



Western blot analysis of lysates from HUVEC cell line , huamn placenta and spleen tissue lysate(from left to right), using GP1BA(Glycocalicin) Antibody (Center)(Cat. #AP20720c). AP20720c was diluted at 1:1000 at each lane. A goat anti-rabbit IgG H&L(HRP) at 1:5000 dilution was used as the secondary antibody. Lysates at 35ug per lane.

Please note: All products are 'FOR RESEARCH USE ONLY. NOT FOR USE IN DIAGNOSTIC OR THERAPEUTIC PROCEDURES'.