

IMMT Antibody (Center)

Purified Rabbit Polyclonal Antibody (Pab)
Catalog # AP20716c

Product Information

Application	WB, E
Primary Accession	Q16891
Reactivity	Human
Host	Rabbit
Clonality	Polyclonal
Isotype	Rabbit IgG
Clone Names	RB49836

Additional Information

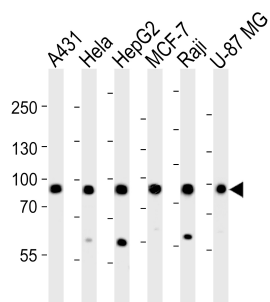
Other Names	MICOS complex subunit MIC60, Cell proliferation-inducing gene 4/52 protein, Mitochondrial inner membrane protein, Mitofilin, p87/89, IMMT, HMP, MIC60, MINOS2
Target/Specificity	This IMMT antibody is generated from a rabbit immunized with a KLH conjugated synthetic peptide between 170-203 amino acids from the Central region of human IMMT.
Dilution	WB~~1:1000 E~~Use at an assay dependent concentration.
Format	Purified polyclonal antibody supplied in PBS with 0.09% (W/V) sodium azide. This antibody is purified through a protein A column, followed by peptide affinity purification.
Storage	Maintain refrigerated at 2-8°C for up to 2 weeks. For long term storage store at -20°C in small aliquots to prevent freeze-thaw cycles.
Precautions	IMMT Antibody (Center) is for research use only and not for use in diagnostic or therapeutic procedures.

Protein Information

References

- Icho T.,et al.Gene 144:301-306(1994).
Gieffers C.,et al.Exp. Cell Res. 232:395-399(1997).
Ebert L.,et al.Submitted (JUN-2004) to the EMBL/GenBank/DDBJ databases.
Ota T.,et al.Nat. Genet. 36:40-45(2004).
Kim J.W.,et al.Submitted (FEB-2005) to the EMBL/GenBank/DDBJ databases.

Images



Western blot analysis of lysates from A431, HeLa, HepG2, MCF-7, Raji, U-87 MG cell line (from left to right), using IMMT Antibody (Center)(Cat. #AP20716c). AP20716c was diluted at 1:1000 at each lane. A goat anti-rabbit IgG H&L(HRP) at 1:5000 dilution was used as the secondary antibody. Lysates at 35ug per lane.

Please note: All products are 'FOR RESEARCH USE ONLY. NOT FOR USE IN DIAGNOSTIC OR THERAPEUTIC PROCEDURES'.