

SPANXA1 Antibody (N-term)

Purified Rabbit Polyclonal Antibody (Pab)

Catalog # AP20710a

Product Information

Application	WB, E
Primary Accession	Q9NS26
Reactivity	Human
Host	Rabbit
Clonality	Polyclonal
Isotype	Rabbit IgG
Clone Names	RB47864

Additional Information

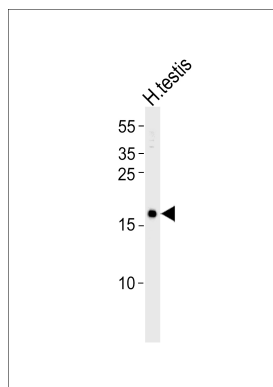
Other Names	Sperm protein associated with the nucleus on the X chromosome A, Cancer/testis antigen 111, CT111, Nuclear-associated protein SPAN-Xa, SPAN-X, SPANX-A, SPANX family member A, SPANXA1, SPANXA
Target/Specificity	This SPANXA1 antibody is generated from a rabbit immunized with a KLH conjugated synthetic peptide between 2-36 amino acids from the N-terminal region of human SPANXA1.
Dilution	WB~~1:1000 E~~Use at an assay dependent concentration.
Format	Purified polyclonal antibody supplied in PBS with 0.09% (W/V) sodium azide. This antibody is purified through a protein A column, followed by peptide affinity purification.
Storage	Maintain refrigerated at 2-8°C for up to 2 weeks. For long term storage store at -20°C in small aliquots to prevent freeze-thaw cycles.
Precautions	SPANXA1 Antibody (N-term) is for research use only and not for use in diagnostic or therapeutic procedures.

Protein Information

References

- Westbrook V.A., et al. Biol. Reprod. 63:469-481(2000).
Zendman A.J., et al. Gene 309:125-133(2003).
Kouprina N., et al. Genome Res. 15:1477-1486(2005).
Larionov V., et al. Submitted (NOV-2006) to the EMBL/GenBank/DDBJ databases.
Ross M.T., et al. Nature 434:325-337(2005).

Images



Western blot analysis of lysate from human testis tissue lysate, using SPANXA1 Antibody (N-term)(Cat. #AP20710a). AP20710a was diluted at 1:1000. A goat anti-rabbit IgG H&L(HRP) at 1:5000 dilution was used as the secondary antibody. Lysate at 35ug.

Please note: All products are 'FOR RESEARCH USE ONLY. NOT FOR USE IN DIAGNOSTIC OR THERAPEUTIC PROCEDURES'.