

# LEPRE1 Antibody (Center)

Purified Rabbit Polyclonal Antibody (Pab)

Catalog # AP20704c

## Product Information

---

Application	WB, E
Primary Accession	<a href="#">Q32P28</a>
Reactivity	Human, Rat, Mouse
Host	Rabbit
Clonality	Polyclonal
Isotype	Rabbit IgG
Clone Names	RB49867
Calculated MW	83394

## Additional Information

---

Gene ID	64175
Other Names	Prolyl 3-hydroxylase 1, Growth suppressor 1, Leucine- and proline-enriched proteoglycan 1, Leprecan-1, LEPRE1, GROS1, P3H1
Target/Specificity	This LEPRE1 antibody is generated from a rabbit immunized with a KLH conjugated synthetic peptide between 499-533 amino acids from the Central region of human LEPRE1.
Dilution	WB~~1:1000 E~~Use at an assay dependent concentration.
Format	Purified polyclonal antibody supplied in PBS with 0.09% (W/V) sodium azide. This antibody is purified through a protein A column, followed by peptide affinity purification.
Storage	Maintain refrigerated at 2-8°C for up to 2 weeks. For long term storage store at -20°C in small aliquots to prevent freeze-thaw cycles.
Precautions	LEPRE1 Antibody (Center) is for research use only and not for use in diagnostic or therapeutic procedures.

## Protein Information

---

Name	P3H1 ( <a href="#">HGNC:19316</a> )
Function	Basement membrane-associated chondroitin sulfate proteoglycan (CSPG). Has prolyl 3-hydroxylase activity catalyzing the post- translational formation of 3-hydroxyproline in -Xaa-Pro-Gly- sequences in collagens, especially types IV and V. May be involved in the secretory pathway of cells. Has growth suppressive activity in fibroblasts.

## Background

---

Basement membrane-associated chondroitin sulfate proteoglycan (CSPG). Has prolyl 3-hydroxylase activity catalyzing the post-translational formation of 3-hydroxyproline in -Xaa-Pro- Gly- sequences in collagens, especially types IV and V. May be involved in the secretory pathway of cells. Has growth suppressive activity in fibroblasts.

## References

---

Kaul S.C.,et al.Oncogene 19:3576-3583(2000).

Ota T.,et al.Nat. Genet. 36:40-45(2004).

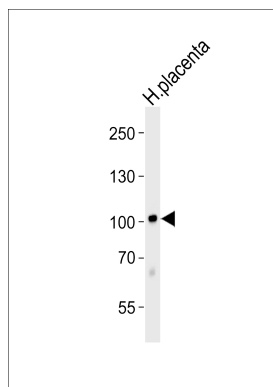
Otsuki T.,et al.DNA Res. 12:117-126(2005).

Kalnine N.,et al.Submitted (MAY-2003) to the EMBL/GenBank/DDBJ databases.

Cabral W.A.,et al.Nat. Genet. 39:359-365(2007).

## Images

---



Western blot analysis of lysate from human placenta tissue lysate, using LEPRE1 Antibody (Center)(Cat. #AP20704c). AP20704c was diluted at 1:1000. A goat anti-rabbit IgG H&L(HRP) at 1:5000 dilution was used as the secondary antibody. Lysate at 35ug.

Please note: All products are 'FOR RESEARCH USE ONLY. NOT FOR USE IN DIAGNOSTIC OR THERAPEUTIC PROCEDURES'.