

# SPATS2 Antibody (C-term)

Purified Rabbit Polyclonal Antibody (Pab)

Catalog # AP20674c

## Product Information

---

<b>Application</b>	WB, E
<b>Primary Accession</b>	<a href="#">Q86XZ4</a>
<b>Reactivity</b>	Human
<b>Host</b>	Rabbit
<b>Clonality</b>	Polyclonal
<b>Isotype</b>	Rabbit IgG
<b>Clone Names</b>	RB48008
<b>Calculated MW</b>	59545

## Additional Information

---

<b>Gene ID</b>	65244
<b>Other Names</b>	Spermatogenesis-associated serine-rich protein 2, Serine-rich spermatocytes and round spermatid 59 kDa protein, p59scr, SPATS2, SCR59, SPATA10
<b>Target/Specificity</b>	This SPATS2 antibody is generated from a rabbit immunized with a KLH conjugated synthetic peptide between 448-482 amino acids from the C-terminal region of human SPATS2.
<b>Dilution</b>	WB~~1:1000 E~~Use at an assay dependent concentration.
<b>Format</b>	Purified polyclonal antibody supplied in PBS with 0.09% (W/V) sodium azide. This antibody is purified through a protein A column, followed by peptide affinity purification.
<b>Storage</b>	Maintain refrigerated at 2-8°C for up to 2 weeks. For long term storage store at -20°C in small aliquots to prevent freeze-thaw cycles.
<b>Precautions</b>	SPATS2 Antibody (C-term) is for research use only and not for use in diagnostic or therapeutic procedures.

## Protein Information

---

<b>Name</b>	SPATS2
<b>Synonyms</b>	SCR59, SPATA10
<b>Cellular Location</b>	Cytoplasm.

## References

---

Ohira M.,et al.Cancer Lett. 197:63-68(2003).

Ota T.,et al.Nat. Genet. 36:40-45(2004).

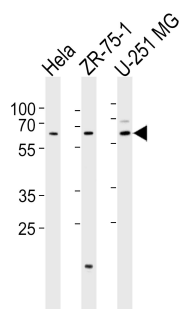
Mural R.J.,et al.Submitted (JUL-2005) to the EMBL/GenBank/DDBJ databases.

Dephoure N.,et al.Proc. Natl. Acad. Sci. U.S.A. 105:10762-10767(2008).

Mayya V.,et al.Sci. Signal. 2:RA46-RA46(2009).

## Images

---



Western blot analysis of lysates from HeLa, ZR-75-1, U-251 MG cell line (from left to right), using SPATS2 Antibody (C-term)(Cat. #AP20674c). AP20674c was diluted at 1:1000 at each lane. A goat anti-rabbit IgG H&L(HRP) at 1:5000 dilution was used as the secondary antibody. Lysates at 35ug per lane.

Please note: All products are 'FOR RESEARCH USE ONLY. NOT FOR USE IN DIAGNOSTIC OR THERAPEUTIC PROCEDURES'.