

IZUMO2 Antibody (Center)

Purified Rabbit Polyclonal Antibody (Pab)

Catalog # AP20659c

Product Information

Application	WB, IHC-P, E
Primary Accession	Q6UXV1
Reactivity	Human
Host	Rabbit
Clonality	Polyclonal
Isotype	Rabbit IgG
Clone Names	RB47539
Calculated MW	24856

Additional Information

Gene ID	126123
Other Names	Izumo sperm-egg fusion protein 2, IZUMO2, C19orf41, SCRL
Target/Specificity	This IZUMO2 antibody is generated from a rabbit immunized with a KLH conjugated synthetic peptide between 90-124 amino acids from the Central region of human IZUMO2.
Dilution	WB~~1:1000 IHC-P~~1:100~500 E~~Use at an assay dependent concentration.
Format	Purified polyclonal antibody supplied in PBS with 0.09% (W/V) sodium azide. This antibody is purified through a protein A column, followed by peptide affinity purification.
Storage	Maintain refrigerated at 2-8°C for up to 2 weeks. For long term storage store at -20°C in small aliquots to prevent freeze-thaw cycles.
Precautions	IZUMO2 Antibody (Center) is for research use only and not for use in diagnostic or therapeutic procedures.

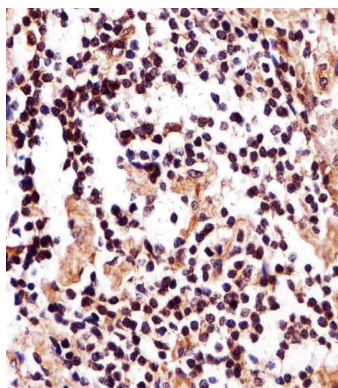
Protein Information

Name	IZUMO2
Synonyms	C19orf41, SCRL
Cellular Location	Membrane; Single-pass type I membrane protein

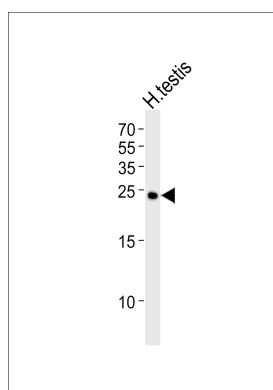
References

Scorilas A.,et al.Submitted (JAN-2002) to the EMBL/GenBank/DDBJ databases.
Clark H.F.,et al.Genome Res. 13:2265-2270(2003).
Ota T.,et al.Nat. Genet. 36:40-45(2004).

Images



Immunohistochemical analysis of paraffin-embedded H. lymph section using IZUMO2 Antibody (Center)(Cat#AP20659c). AP20659c was diluted at 1:25 dilution. A undiluted biotinylated goat polyvalent antibody was used as the secondary, followed by DAB staining.



Western blot analysis of lysate from human testis tissue lysate, using IZUMO2 Antibody (Center)(Cat. #AP20659c). AP20659c was diluted at 1:1000. A goat anti-rabbit IgG H&L(HRP) at 1:5000 dilution was used as the secondary antibody. Lysate at 35ug.

Please note: All products are 'FOR RESEARCH USE ONLY. NOT FOR USE IN DIAGNOSTIC OR THERAPEUTIC PROCEDURES'.