

CYS1 Antibody (C-term)

Purified Rabbit Polyclonal Antibody (Pab)

Catalog # AP20652c

Product Information

Application	WB, IHC-P, E
Primary Accession	Q717R9
Reactivity	Human, Mouse
Host	Rabbit
Clonality	Polyclonal
Isotype	Rabbit IgG
Clone Names	RB49884
Calculated MW	16393

Additional Information

Gene ID	192668
Other Names	Cystin-1, Cilia-associated protein, CYS1
Target/Specificity	This CYS1 antibody is generated from a rabbit immunized with a KLH conjugated synthetic peptide between 142-177 amino acids from the C-terminal region of human CYS1.
Dilution	WB~~1:1000 IHC-P~~1:100~500 E~~Use at an assay dependent concentration.
Format	Purified polyclonal antibody supplied in PBS with 0.09% (W/V) sodium azide. This antibody is purified through a protein A column, followed by peptide affinity purification.
Storage	Maintain refrigerated at 2-8°C for up to 2 weeks. For long term storage store at -20°C in small aliquots to prevent freeze-thaw cycles.
Precautions	CYS1 Antibody (C-term) is for research use only and not for use in diagnostic or therapeutic procedures.

Protein Information

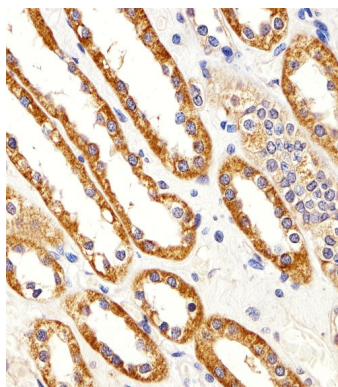
Name	CYS1
Cellular Location	Cell projection, cilium membrane; Lipid-anchor. Cytoplasm, cytoskeleton, cilium axoneme. Note=Expression is enriched in the ciliary axoneme. Localization to cilium is mediated via interaction with UNC119 and UNC119B, which bind to the myristoyl moiety of the N- terminus
Tissue Location	Expressed at high levels in the kidney and pancreas. Moderate expression

seen in the skeletal muscle, liver and heart. A weak expression seen in the brain, lung, uterus, prostate, testis, small intestine and colon

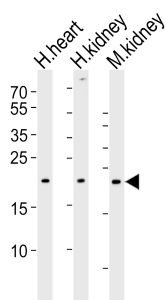
References

Fliegau M.,et al.Pediatr. Nephrol. 18:498-505(2003).
Hou X.,et al.J. Clin. Invest. 109:533-540(2002).
Wright K.J.,et al.Genes Dev. 25:2347-2360(2011).

Images



Immunohistochemical analysis of paraffin-embedded H.kidney section using CYS1 Antibody (C-term)(Cat#AP20652c). AP20652c was diluted at 1:25 dilution. A peroxidase-conjugated goat anti-rabbit IgG at 1:400 dilution was used as the secondary antibody, followed by DAB staining.



Western blot analysis of lysates from human heart, human kidney and mouse kidney tissue lysate(from left to right), using CYS1 Antibody (C-term)(Cat. #AP20652c). AP20652c was diluted at 1:1000 at each lane. A goat anti-rabbit IgG H&L(HRP) at 1:5000 dilution was used as the secondary antibody. Lysates at 35ug per lane.

Please note: All products are 'FOR RESEARCH USE ONLY. NOT FOR USE IN DIAGNOSTIC OR THERAPEUTIC PROCEDURES'.