

# CRX Antibody (C-term)

Purified Rabbit Polyclonal Antibody (Pab)

Catalog # AP20611c

## Product Information

---

<b>Application</b>	WB, E
<b>Primary Accession</b>	<a href="#">O43186</a>
<b>Reactivity</b>	Human, Rat, Mouse
<b>Host</b>	Rabbit
<b>Clonality</b>	Polyclonal
<b>Isotype</b>	Rabbit IgG
<b>Clone Names</b>	RB49208
<b>Calculated MW</b>	32261

## Additional Information

---

<b>Gene ID</b>	1406
<b>Other Names</b>	Cone-rod homeobox protein, CRX, CORD2
<b>Target/Specificity</b>	This CRX antibody is generated from a rabbit immunized with a KLH conjugated synthetic peptide between 294-297 amino acids from the C-terminal region of human CRX.
<b>Dilution</b>	WB~~1:1000 E~~Use at an assay dependent concentration.
<b>Format</b>	Purified polyclonal antibody supplied in PBS with 0.09% (W/V) sodium azide. This antibody is purified through a protein A column, followed by peptide affinity purification.
<b>Storage</b>	Maintain refrigerated at 2-8°C for up to 2 weeks. For long term storage store at -20°C in small aliquots to prevent freeze-thaw cycles.
<b>Precautions</b>	CRX Antibody (C-term) is for research use only and not for use in diagnostic or therapeutic procedures.

## Protein Information

---

<b>Name</b>	CRX
<b>Synonyms</b>	CORD2
<b>Function</b>	Transcription factor that binds and transactivates the sequence 5'-TAATC[CA]-3' which is found upstream of several photoreceptor-specific genes, including the opsin genes. Acts synergistically with other transcription factors, such as NRL, RORB and RAX, to regulate photoreceptor cell-specific

gene transcription. Essential for the maintenance of mammalian photoreceptors.

**Cellular Location**

Nucleus {ECO:0000255|PROSITE-ProRule:PRU00108}.

**Tissue Location**

Retina.

## Background

---

Binds and transactivates the sequence 5'-TAATC[CA]-3' which is found upstream of several photoreceptor-specific genes, including the opsin genes. Acts synergistically with other transcription factors, e.g. NRL and RX, to regulate photoreceptor cell-specific gene transcription. Essential for the maintenance of mammalian photoreceptors.

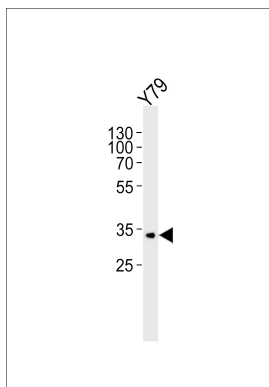
## References

---

Freund C.L.,et al.Cell 91:543-553(1997).  
Kalnine N.,et al.Submitted (MAY-2003) to the EMBL/GenBank/DDBJ databases.  
Grimwood J.,et al.Nature 428:529-535(2004).  
Roni V.,et al.BMC Genomics 8:42-42(2007).  
Kimura A.,et al.J. Biol. Chem. 275:1152-1160(2000).

## Images

---



Western blot analysis of lysate from Y79 cell line, using CRX Antibody (C-term)(Cat. #AP20611c). AP20611c was diluted at 1:1000. A goat anti-rabbit IgG H&L(HRP) at 1:5000 dilution was used as the secondary antibody. Lysate at 35ug.

Please note: All products are 'FOR RESEARCH USE ONLY. NOT FOR USE IN DIAGNOSTIC OR THERAPEUTIC PROCEDURES'.