

# LYZ Antibody (C-term)

Purified Rabbit Polyclonal Antibody (Pab)  
Catalog # AP20609C

## Product Information

---

<b>Application</b>	WB, IHC-P, E
<b>Primary Accession</b>	<a href="#">P61626</a>
<b>Reactivity</b>	Human
<b>Host</b>	Rabbit
<b>Clonality</b>	Polyclonal
<b>Isotype</b>	Rabbit IgG
<b>Clone Names</b>	RB48842

## Additional Information

---

<b>Other Names</b>	Lysozyme C, 4-beta-N-acetylmuramidase C, LYZ, LZM
<b>Target/Specificity</b>	This LYZ antibody is generated from a rabbit immunized with a KLH conjugated synthetic peptide between 119-154 amino acids from the C-terminal region of human LYZ.
<b>Dilution</b>	WB~~1:2000 IHC-P~~1:100~500 E~~Use at an assay dependent concentration.
<b>Format</b>	Purified polyclonal antibody supplied in PBS with 0.09% (W/V) sodium azide. This antibody is purified through a protein A column, followed by peptide affinity purification.
<b>Storage</b>	Maintain refrigerated at 2-8°C for up to 2 weeks. For long term storage store at -20°C in small aliquots to prevent freeze-thaw cycles.
<b>Precautions</b>	LYZ Antibody (C-term) is for research use only and not for use in diagnostic or therapeutic procedures.

## Protein Information

---

### Background

---

Lysozymes have primarily a bacteriolytic function; those in tissues and body fluids are associated with the monocyte- macrophage system and enhance the activity of immunoagents.

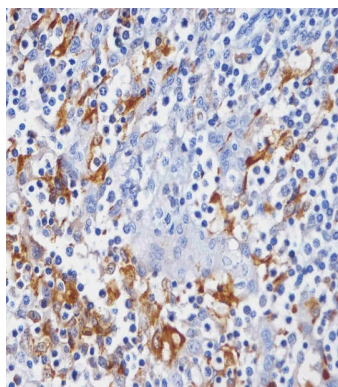
### References

---

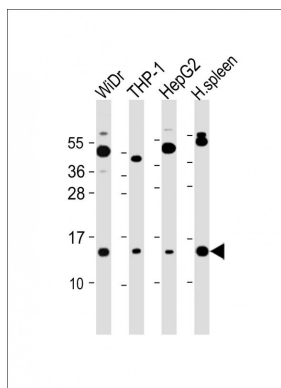
Castanon M.J.,et al.Gene 66:223-234(1988).  
Chung L.P.,et al.Proc. Natl. Acad. Sci. U.S.A. 85:6227-6231(1988).

Yoshimura K.,et al.Biochem. Biophys. Res. Commun. 150:794-801(1988).  
Peters C.W.B.,et al.Eur. J. Biochem. 182:507-516(1989).  
Huang B.,et al.Sheng Wu Hua Hsueh Tsa Chih 9:269-273(1993).

## Images



AP20609C staining LYZ in human tonsil tissue sections by Immunohistochemistry (IHC-P - paraformaldehyde-fixed, paraffin-embedded sections). Tissue was fixed with formaldehyde and blocked with 3% BSA for 0.5 hour at room temperature; antigen retrieval was by heat mediation with a citrate buffer (pH6). Samples were incubated with primary antibody (1/25) for 1 hours at 37°C. A undiluted biotinylated goat polyvalent antibody was used as the secondary antibody.



All lanes : Anti-LYZ Antibody (C-term) at 1:2000 dilution  
Lane 1: WiDr whole cell lysate Lane 2: THP-1 whole cell lysate  
Lane 3: HepG2 whole cell lysate Lane 4: Human spleen lysate  
Lysates/proteins at 20 µg per lane.  
Secondary Goat Anti-Rabbit IgG, (H+L), Peroxidase conjugated at 1/10000 dilution. Predicted band size : 17 kDa  
Blocking/Dilution buffer: 5% NFDM/TBST.

Please note: All products are 'FOR RESEARCH USE ONLY. NOT FOR USE IN DIAGNOSTIC OR THERAPEUTIC PROCEDURES'.