

BUB3 Antibody (Drosophila)

Purified Rabbit Polyclonal Antibody (Pab)

Catalog # AP20606a

Product Information

Application	WB, E
Primary Accession	Q9VAJ2
Reactivity	Human, Drosophila
Host	Rabbit
Clonality	Polyclonal
Isotype	Rabbit IgG
Clone Names	RB36332
Calculated MW	37415
Antigen Region	201-230

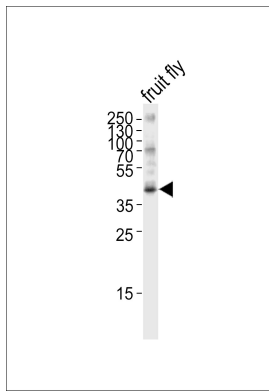
Additional Information

Gene ID	43490
Target/Specificity	This BUB3 antibody is generated from a rabbit immunized with a KLH conjugated synthetic peptide between 201-230 amino acids from Drosophila melanogaster (Fruit fly) BUB3.
Dilution	WB~~1:1000 E~~Use at an assay dependent concentration.
Format	Purified polyclonal antibody supplied in PBS with 0.09% (W/V) sodium azide. This antibody is purified through a protein A column, followed by peptide affinity purification.
Storage	Maintain refrigerated at 2-8°C for up to 2 weeks. For long term storage store at -20°C in small aliquots to prevent freeze-thaw cycles.
Precautions	BUB3 Antibody (Drosophila) is for research use only and not for use in diagnostic or therapeutic procedures.

Protein Information

Name	Q9VAJ2
Cellular Location	Chromosome, centromere, kinetochore {ECO:0000256 ARBA:ARBA00004629}. Nucleus {ECO:0000256 ARBA:ARBA00004123}

Images



Western blot analysis of lysate from fruit fly, using BUB3 Antibody (Drosophila)(Cat. #AP20606a). AP20606a was diluted at 1:1000. A goat anti-rabbit IgG H&L(HRP) at 1:5000 dilution was used as the secondary antibody. Lysate at 35ug.

Citations

- [A tumor suppressor role of the Bub3 spindle checkpoint protein after apoptosis inhibition.](#)

Please note: All products are 'FOR RESEARCH USE ONLY. NOT FOR USE IN DIAGNOSTIC OR THERAPEUTIC PROCEDURES'.