

HBG2 Antibody (C-term)

Purified Rabbit Polyclonal Antibody (Pab)

Catalog # AP20600c

Product Information

Application	WB, FC, IHC-P, E
Primary Accession	P69892
Reactivity	Human, Rat, Mouse
Host	Rabbit
Clonality	Polyclonal
Isotype	Rabbit IgG
Clone Names	RB44841
Calculated MW	16126

Additional Information

Gene ID	3048
Other Names	Hemoglobin subunit gamma-2, Gamma-2-globin, Hb F Ggamma, Hemoglobin gamma-2 chain, Hemoglobin gamma-G chain, HBG2
Target/Specificity	This HBG2 antibody is generated from a rabbit immunized with a KLH conjugated synthetic peptide between 101-133 amino acids from the C-terminal region of human HBG2.
Dilution	WB~~1:1000 FC~~1:25 IHC-P~~1:100~500 E~~Use at an assay dependent concentration.
Format	Purified polyclonal antibody supplied in PBS with 0.09% (W/V) sodium azide. This antibody is purified through a protein A column, followed by peptide affinity purification.
Storage	Maintain refrigerated at 2-8°C for up to 2 weeks. For long term storage store at -20°C in small aliquots to prevent freeze-thaw cycles.
Precautions	HBG2 Antibody (C-term) is for research use only and not for use in diagnostic or therapeutic procedures.

Protein Information

Name	HBG2
Function	Gamma chains make up the fetal hemoglobin F, in combination with alpha chains.
Tissue Location	Red blood cells.

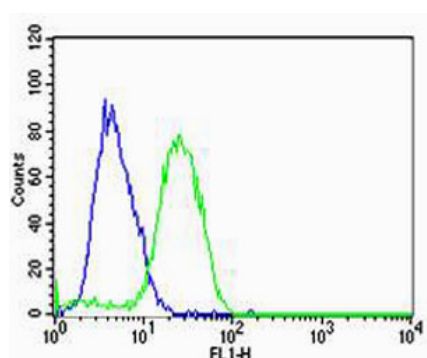
Background

Gamma chains make up the fetal hemoglobin F, in combination with alpha chains.

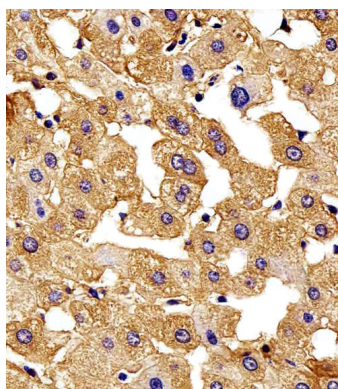
References

Slightom J.L.,et al.Cell 21:627-638(1980).
Cavallesco C.,et al.Gene 12:215-221(1980).
Kutlar F.,et al.Submitted (JUN-2004) to the EMBL/GenBank/DDBJ databases.
Ota T.,et al.Nat. Genet. 36:40-45(2004).
Schroeder W.A.,et al.Biochemistry 2:992-1008(1963).

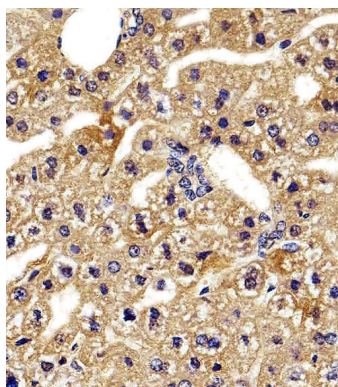
Images



Flow cytometric analysis of U-87 MG cells using HBG2 Antibody (C-term)(green, Cat#AP20600c) compared to an isotype control of rabbit IgG(blue). AP20600c was diluted at 1:25 dilution. An Alexa Fluor® 488 goat anti-rabbit IgG at 1:400 dilution was used as the secondary antibody.

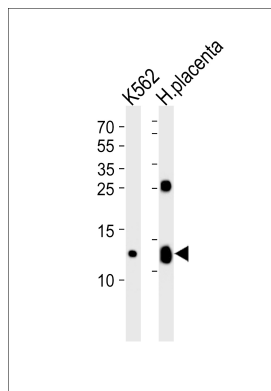


Immunohistochemical analysis of paraffin-embedded H. liver section using HBG2 Antibody (C-term)(Cat#AP8074c). AP8074c was diluted at 1:100 dilution. A peroxidase-conjugated goat anti-rabbit IgG at 1:400 dilution was used as the secondary antibody, followed by DAB staining.



Immunohistochemical analysis of paraffin-embedded M. liver section using HBG2 Antibody (C-term)(Cat#AP20600c). AP20600c was diluted at 1:100 dilution. A peroxidase-conjugated goat anti-rabbit IgG at 1:400 dilution was used as the secondary antibody, followed by DAB staining.

Western blot analysis of lysates from K562 cell line and human placenta tissue lysate (from left to right), using HBG2 Antibody (C-term)(Cat. # AP20600c). AP20600c was diluted at 1:1000 at each lane. A goat anti-rabbit IgG



H&L(HRP) at 1:5000 dilution was used as the secondary antibody. Lysates at 35ug per lane.

Please note: All products are 'FOR RESEARCH USE ONLY. NOT FOR USE IN DIAGNOSTIC OR THERAPEUTIC PROCEDURES'.