

# HBG2 Antibody (C-term)

Purified Rabbit Polyclonal Antibody (Pab)

Catalog # AP20582c

## Product Information

---

<b>Application</b>	WB, IHC-P, FC, E
<b>Primary Accession</b>	<a href="#">P69892</a>
<b>Reactivity</b>	Human, Rat, Mouse
<b>Host</b>	Rabbit
<b>Clonality</b>	Polyclonal
<b>Isotype</b>	Rabbit IgG
<b>Clone Names</b>	RB44842
<b>Calculated MW</b>	16126

## Additional Information

---

<b>Gene ID</b>	3048
<b>Other Names</b>	Hemoglobin subunit gamma-2, Gamma-2-globin, Hb F Ggamma, Hemoglobin gamma-2 chain, Hemoglobin gamma-G chain, HBG2
<b>Target/Specificity</b>	This HBG2 antibody is generated from a rabbit immunized with a KLH conjugated synthetic peptide between 101-133 amino acids from the C-terminal region of human HBG2.
<b>Dilution</b>	WB~~1:1000 IHC-P~~1:100~500 FC~~1:25 E~~Use at an assay dependent concentration.
<b>Format</b>	Purified polyclonal antibody supplied in PBS with 0.09% (W/V) sodium azide. This antibody is purified through a protein A column, followed by peptide affinity purification.
<b>Storage</b>	Maintain refrigerated at 2-8°C for up to 2 weeks. For long term storage store at -20°C in small aliquots to prevent freeze-thaw cycles.
<b>Precautions</b>	HBG2 Antibody (C-term) is for research use only and not for use in diagnostic or therapeutic procedures.

## Protein Information

---

<b>Name</b>	HBG2
<b>Function</b>	Gamma chains make up the fetal hemoglobin F, in combination with alpha chains.
<b>Tissue Location</b>	Red blood cells.

## Background

---

Gamma chains make up the fetal hemoglobin F, in combination with alpha chains.

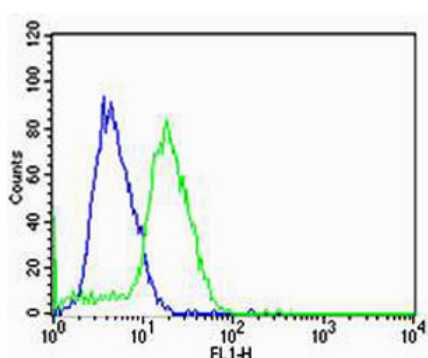
## References

---

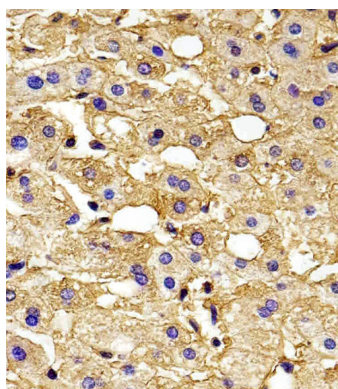
Slightom J.L.,et al.Cell 21:627-638(1980).  
Cavallesco C.,et al.Gene 12:215-221(1980).  
Kutlar F.,et al.Submitted (JUN-2004) to the EMBL/GenBank/DDBJ databases.  
Ota T.,et al.Nat. Genet. 36:40-45(2004).  
Schroeder W.A.,et al.Biochemistry 2:992-1008(1963).

## Images

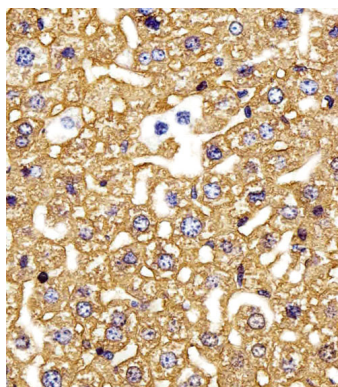
---



Flow cytometric analysis of U-87 MG cells using HBG2 Antibody (C-term)(green, Cat#AP20582c) compared to an isotype control of rabbit IgG(blue). AP20582c was diluted at 1:25 dilution. An Alexa Fluor® 488 goat anti-rabbit IgG at 1:400 dilution was used as the secondary antibody.

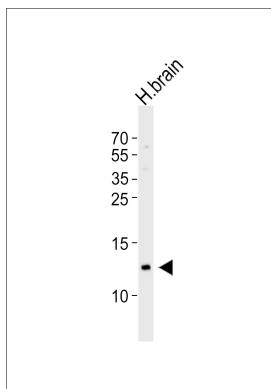


Immunohistochemical analysis of paraffin-embedded H. liver section using HBG2 Antibody (C-term)(Cat#AP20582c). AP20582c was diluted at 1:100 dilution. A peroxidase-conjugated goat anti-rabbit IgG at 1:400 dilution was used as the secondary antibody, followed by DAB staining.



Immunohistochemical analysis of paraffin-embedded M. liver section using HBG2 Antibody (C-term)(Cat#AP20582c). AP20582c was diluted at 1:100 dilution. A peroxidase-conjugated goat anti-rabbit IgG at 1:400 dilution was used as the secondary antibody, followed by DAB staining.

Western blot analysis of lysates from human brain tissue lysate, using HBG2 Antibody (C-term) (Cat. #AP20582c). AP20582c was diluted at 1:1000 at each lane. A goat anti-rabbit IgG H&L(HRP) at 1:5000 dilution was used as



the secondary antibody. Lysates at 35ug per lane.

Please note: All products are 'FOR RESEARCH USE ONLY. NOT FOR USE IN DIAGNOSTIC OR THERAPEUTIC PROCEDURES'.