

# C1QA Antibody (Center)

Purified Rabbit Polyclonal Antibody (Pab)

Catalog # AP20555c

## Product Information

---

Application	WB, E
Primary Accession	<a href="#">P02745</a>
Reactivity	Human
Host	Rabbit
Clonality	Polyclonal
Isotype	Rabbit IgG
Clone Names	RB47724
Calculated MW	26017

## Additional Information

---

Gene ID	712
Other Names	Complement C1q subcomponent subunit A, C1QA
Target/Specificity	This C1QA antibody is generated from a rabbit immunized with a KLH conjugated synthetic peptide between 89-103 amino acids from the Central region of human C1QA.
Dilution	WB~~1:1000 E~~Use at an assay dependent concentration.
Format	Purified polyclonal antibody supplied in PBS with 0.09% (W/V) sodium azide. This antibody is purified through a protein A column, followed by peptide affinity purification.
Storage	Maintain refrigerated at 2-8°C for up to 2 weeks. For long term storage store at -20°C in small aliquots to prevent freeze-thaw cycles.
Precautions	C1QA Antibody (Center) is for research use only and not for use in diagnostic or therapeutic procedures.

## Protein Information

---

Name	C1QA {ECO:0000303 PubMed:1706597, ECO:0000312 HGNC:HGNC:1241}
Function	Core component of the complement C1 complex, a multiprotein complex that initiates the classical pathway of the complement system, a cascade of proteins that leads to phagocytosis and breakdown of pathogens and signaling that strengthens the adaptive immune system (PubMed: <a href="#">12847249</a> , PubMed: <a href="#">19006321</a> , PubMed: <a href="#">24626930</a> , PubMed: <a href="#">29449492</a> , PubMed: <a href="#">3258649</a> , PubMed: <a href="#">34155115</a> , PubMed: <a href="#">6249812</a> , PubMed: <a href="#">6776418</a> ). The classical

complement pathway is initiated by the C1Q subcomplex of the C1 complex, which specifically binds IgG or IgM immunoglobulins complexed with antigens, forming antigen-antibody complexes on the surface of pathogens: C1QA, together with C1QB and C1QC, specifically recognizes and binds the Fc regions of IgG or IgM via its C1q domain (PubMed:[12847249](#), PubMed:[19006321](#), PubMed:[24626930](#), PubMed:[29449492](#), PubMed:[3258649](#), PubMed:[6776418](#)). Immunoglobulin-binding activates the proenzyme C1R, which cleaves C1S, initiating the proteolytic cascade of the complement system (PubMed:[29449492](#)). The C1Q subcomplex is activated by a hexamer of IgG complexed with antigens, while it is activated by a pentameric IgM (PubMed:[19706439](#), PubMed:[24626930](#), PubMed:[29449492](#)). The C1Q subcomplex also recognizes and binds phosphatidylserine exposed on the surface of cells undergoing programmed cell death, possibly promoting activation of the complement system (PubMed:[18250442](#)).

#### Cellular Location

Secreted. Cell surface. Note=Specifically binds IgG or IgM immunoglobulins complexed with antigens, forming antigen-antibody complexes on the surface of pathogens.

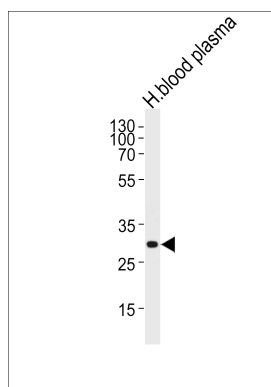
## Background

C1q associates with the proenzymes C1r and C1s to yield C1, the first component of the serum complement system. The collagen-like regions of C1q interact with the Ca(2+)-dependent C1r(2)C1s(2) proenzyme complex, and efficient activation of C1 takes place on interaction of the globular heads of C1q with the Fc regions of IgG or IgM antibody present in immune complexes.

## References

Sellar G.C.,et al.Biochem. J. 274:481-490(1991).  
Wan T.,et al.Submitted (MAR-1999) to the EMBL/GenBank/DDBJ databases.  
Ota T.,et al.Nat. Genet. 36:40-45(2004).  
Gregory S.G.,et al.Nature 441:315-321(2006).  
Mural R.J.,et al.Submitted (JUL-2005) to the EMBL/GenBank/DDBJ databases.

## Images



Western blot analysis of lysate from human blood plasma tissue lysate, using C1QA Antibody (Center) (Cat. # AP20555c). AP20555c was diluted at 1:1000 at each lane. A goat anti-rabbit IgG H&L(HRP) at 1:5000 dilution was used as the secondary antibody. Lysate at 35ug per lane.

Please note: All products are 'FOR RESEARCH USE ONLY. NOT FOR USE IN DIAGNOSTIC OR THERAPEUTIC PROCEDURES'.