

PHF11 Antibody (Center)

Purified Rabbit Polyclonal Antibody (Pab)

Catalog # AP20554c

Product Information

Application	WB, E
Primary Accession	Q9UIL8
Reactivity	Human
Host	Rabbit
Clonality	Polyclonal
Isotype	Rabbit IgG
Clone Names	RB48083
Calculated MW	37582

Additional Information

Gene ID	51131
Other Names	PHD finger protein 11, BRCA1 C-terminus-associated protein, Renal carcinoma antigen NY-REN-34, PHF11, BCAP
Target/Specificity	This PHF11 antibody is generated from a rabbit immunized with a KLH conjugated synthetic peptide between 158-191 amino acids from the Central region of human PHF11.
Dilution	WB~~1:1000 E~~Use at an assay dependent concentration.
Format	Purified polyclonal antibody supplied in PBS with 0.09% (W/V) sodium azide. This antibody is purified through a protein A column, followed by peptide affinity purification.
Storage	Maintain refrigerated at 2-8°C for up to 2 weeks. For long term storage store at -20°C in small aliquots to prevent freeze-thaw cycles.
Precautions	PHF11 Antibody (Center) is for research use only and not for use in diagnostic or therapeutic procedures.

Protein Information

Name	PHF11
Synonyms	BCAP
Function	Positive regulator of Th1-type cytokine gene expression.
Cellular Location	Nucleus.

Tissue Location

Highly expressed in T and B-cells, as well as natural killer and mature dendritic cells. Expressed at higher levels in Th1 as compared to Th2 cells. Expressed at low levels in all normal tissues tested, including lung, testis, small intestine, breast, liver and placenta.

Background

Positive regulator of Th1-type cytokine gene expression.

References

Scanlan M.J.,et al.Int. J. Cancer 83:456-464(1999).

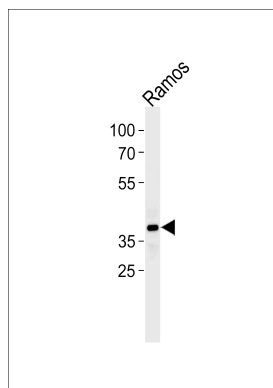
Kato H.,et al.Submitted (FEB-1998) to the EMBL/GenBank/DDBJ databases.

Dunham A.,et al.Nature 428:522-528(2004).

Mural R.J.,et al.Submitted (JUL-2005) to the EMBL/GenBank/DDBJ databases.

Zhang Y.,et al.Nat. Genet. 34:181-186(2003).

Images



Western blot analysis of lysate from Ramos cell line, using PHF11 Antibody (Center) (Cat. #AP20554c). AP20554c was diluted at 1:1000 at each lane. A goat anti-rabbit(HRP) at 1:5000 dilution was used as the secondary antibody. Lysate at 35ug.

Please note: All products are 'FOR RESEARCH USE ONLY. NOT FOR USE IN DIAGNOSTIC OR THERAPEUTIC PROCEDURES'.