

## GGN Antibody (Center)

Affinity Purified Rabbit Polyclonal Antibody (Pab)

Catalog # AP20537c

### Product Information

---

Application	WB, E
Primary Accession	<a href="#">Q86UU5</a>
Reactivity	Human
Host	Rabbit
Clonality	Polyclonal
Isotype	Rabbit IgG
Calculated MW	66699
Antigen Region	139-163

### Additional Information

---

Gene ID	199720
Other Names	Gametogenetin, GGN
Target/Specificity	This GGN antibody is generated from rabbits immunized with a KLH conjugated synthetic peptide between 139-163 amino acids from the Central region of human GGN.
Dilution	WB~~1:1000 E~~Use at an assay dependent concentration.
Format	Purified polyclonal antibody supplied in PBS with 0.09% (W/V) sodium azide. This antibody is purified through a protein A column, followed by peptide affinity purification.
Storage	Maintain refrigerated at 2-8°C for up to 2 weeks. For long term storage store at -20°C in small aliquots to prevent freeze-thaw cycles.
Precautions	GGN Antibody (Center) is for research use only and not for use in diagnostic or therapeutic procedures.

### Protein Information

---

Name	GGN
Function	May be involved in spermatogenesis.

### Background

---

May be involved in spermatogenesis (By similarity).

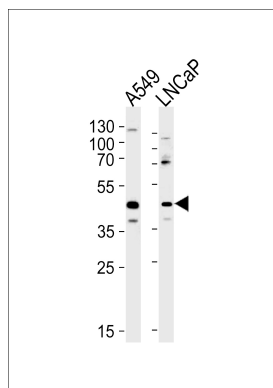
## References

---

Lu B., et al. J. Biol. Chem. 278:16289-16296(2003).  
Ota T., et al. Nat. Genet. 36:40-45(2004).

## Images

---



GGN Antibody (Center) (Cat. #AP20537c) western blot analysis in A549,LNCaP cell line lysates (35ug/lane).This demonstrates the GGN antibody detected the GGN protein (arrow).

Please note: All products are 'FOR RESEARCH USE ONLY. NOT FOR USE IN DIAGNOSTIC OR THERAPEUTIC PROCEDURES'.