

# EPM2AIP1 Antibody (N-term)

Affinity Purified Rabbit Polyclonal Antibody (Pab)

Catalog # AP20528a

## Product Information

---

Application	WB, E
Primary Accession	<a href="#">Q7L775</a>
Reactivity	Human, Mouse
Host	Rabbit
Clonality	Polyclonal
Isotype	Rabbit IgG
Calculated MW	70370
Antigen Region	39-62

## Additional Information

---

Gene ID	9852
Other Names	EPM2A-interacting protein 1, Laforin-interacting protein, EPM2AIP1, KIAA0766
Target/Specificity	This EPM2AIP1 antibody is generated from rabbits immunized with a KLH conjugated synthetic peptide between 39-62 amino acids from the N-terminal region of human EPM2AIP1.
Dilution	WB~~1:1000 E~~Use at an assay dependent concentration.
Format	Purified polyclonal antibody supplied in PBS with 0.09% (W/V) sodium azide. This antibody is purified through a protein A column, followed by peptide affinity purification.
Storage	Maintain refrigerated at 2-8°C for up to 2 weeks. For long term storage store at -20°C in small aliquots to prevent freeze-thaw cycles.
Precautions	EPM2AIP1 Antibody (N-term) is for research use only and not for use in diagnostic or therapeutic procedures.

## Protein Information

---

Name	EPM2AIP1
Synonyms	KIAA0766
Cellular Location	Endoplasmic reticulum
Tissue Location	Expressed in heart, brain, placenta, liver, pancreas, kidney and skeletal muscle.

## References

---

Ianzano L., et al. Genomics 81:579-587(2003).

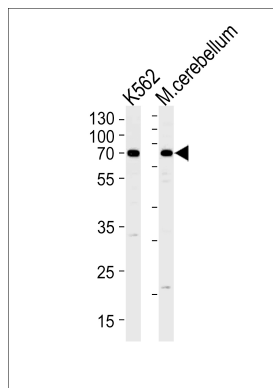
Mao Y.M., et al. Submitted (APR-1998) to the EMBL/GenBank/DDBJ databases.

Nagase T., et al. DNA Res. 5:277-286(1998).

Daub H., et al. Mol. Cell 31:438-448(2008).

## Images

---



EPM2AIP1 Antibody (N-term) (Cat. #AP20528a) western blot analysis in K562 cell line and mouse cerebellum tissue lysates (35ug/lane). This demonstrates the EPM2AIP1 antibody detected the EPM2AIP1 protein (arrow).

Please note: All products are 'FOR RESEARCH USE ONLY. NOT FOR USE IN DIAGNOSTIC OR THERAPEUTIC PROCEDURES'.