

# CALB1 Antibody (Center)

Affinity Purified Rabbit Polyclonal Antibody (Pab)

Catalog # AP20497c

## Product Information

---

<b>Application</b>	WB, IHC-P, E
<b>Primary Accession</b>	<a href="#">P05937</a>
<b>Other Accession</b>	<a href="#">P07171</a> , <a href="#">P12658</a> , <a href="#">P04467</a>
<b>Reactivity</b>	Human, Rat, Mouse
<b>Predicted</b>	Bovine, Mouse
<b>Host</b>	Rabbit
<b>Clonality</b>	Polyclonal
<b>Isotype</b>	Rabbit IgG
<b>Calculated MW</b>	30025
<b>Antigen Region</b>	90-116

## Additional Information

---

<b>Gene ID</b>	793
<b>Other Names</b>	Calbindin, Calbindin D28, D-28K, Vitamin D-dependent calcium-binding protein, avian-type, CALB1, CAB27
<b>Target/Specificity</b>	This CALB1 antibody is generated from rabbits immunized with a KLH conjugated synthetic peptide between 90-116 amino acids from the Central region of human CALB1.
<b>Dilution</b>	WB~~1:1000 IHC-P~~1:100~500 E~~Use at an assay dependent concentration.
<b>Format</b>	Purified polyclonal antibody supplied in PBS with 0.09% (W/V) sodium azide. This antibody is purified through a protein A column, followed by peptide affinity purification.
<b>Storage</b>	Maintain refrigerated at 2-8°C for up to 2 weeks. For long term storage store at -20°C in small aliquots to prevent freeze-thaw cycles.
<b>Precautions</b>	CALB1 Antibody (Center) is for research use only and not for use in diagnostic or therapeutic procedures.

## Protein Information

---

<b>Name</b>	CALB1
<b>Synonyms</b>	CAB27
<b>Function</b>	Buffers cytosolic calcium. May stimulate a membrane Ca(2+)- ATPase and a

## Background

---

Buffers cytosolic calcium. May stimulate a membrane Ca(2+)-ATPase and a 3',5'-cyclic nucleotide phosphodiesterase.

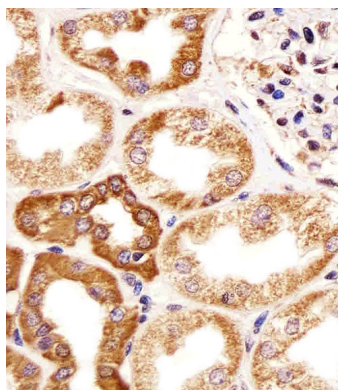
## References

---

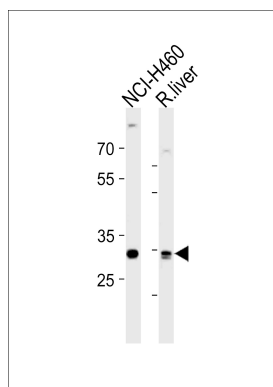
Parmentier M., et al. Eur. J. Biochem. 170:207-215(1987).  
Ota T., et al. Nat. Genet. 36:40-45(2004).  
Nusbaum C., et al. Nature 439:331-335(2006).  
Mural R.J., et al. Submitted (JUL-2005) to the EMBL/GenBank/DDBJ databases.  
Parmentier M., et al. Genomics 4:309-319(1989).

## Images

---



Immunohistochemical analysis of paraffin-embedded H. kideny section using CALB1 Antibody (Center)(Cat#AP20497C). AP20497C was diluted at 1:25 dilution. A undiluted biotinylated goat polyvalent antibody was used as the secondary, followed by DAB staining.



CALB1 Antibody (Center) (Cat. #AP20497c) western blot analysis in NCI-H460 cell line and rat liver tissue lysates (35ug/lane). This demonstrates the CALB1 antibody detected the CALB1 protein (arrow).

Please note: All products are 'FOR RESEARCH USE ONLY. NOT FOR USE IN DIAGNOSTIC OR THERAPEUTIC PROCEDURES'.