

R Cebpd Antibody (Center)

Affinity Purified Rabbit Polyclonal Antibody (Pab)

Catalog # AP20492c

Product Information

Application	WB, E
Primary Accession	Q03484
Reactivity	Human, Rat, Mouse
Host	Rabbit
Clonality	Polyclonal
Isotype	Rabbit IgG
Calculated MW	28600
Antigen Region	161-189

Additional Information

Gene ID	25695
Other Names	CCAAT/enhancer-binding protein delta, C/EBP delta, Transcription factor CELF, Cebpd, Celf
Target/Specificity	This Rat Cebpd antibody is generated from rabbits immunized with a KLH conjugated synthetic peptide between 161-189 amino acids from the Central region of rat Cebpd.
Dilution	WB~~1:1000 E~~Use at an assay dependent concentration.
Format	Purified polyclonal antibody supplied in PBS with 0.09% (W/V) sodium azide. This antibody is purified through a protein A column, followed by peptide affinity purification.
Storage	Maintain refrigerated at 2-8°C for up to 2 weeks. For long term storage store at -20°C in small aliquots to prevent freeze-thaw cycles.
Precautions	R Cebpd Antibody (Center) is for research use only and not for use in diagnostic or therapeutic procedures.

Protein Information

Name	Cebpd
Synonyms	Celf
Function	Transcription activator that recognizes two different DNA motifs: the CCAAT homology common to many promoters and the enhanced core homology common to many enhancers (PubMed: 1714459). Important transcription

factor regulating the expression of genes involved in immune and inflammatory responses. Transcriptional activator that enhances IL6 transcription alone and as heterodimer with CEBPB (By similarity).

Cellular Location

Nucleus.

Tissue Location

Ubiquitously expressed.

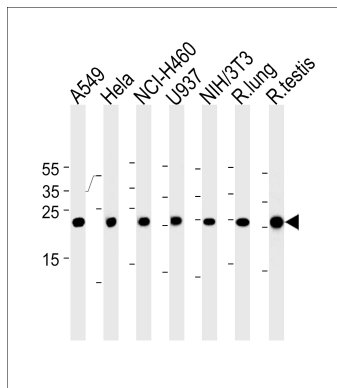
Background

C/EBP is a DNA-binding protein that recognizes two different motifs: the CCAAT homology common to many promoters and the enhanced core homology common to many enhancers. Important transcriptional activator in the regulation of genes involved in immune and inflammatory responses, may play an important role in the regulation of the several genes associated with activation and/or differentiation of macrophages (By similarity).

References

Kageyama R., et al. J. Biol. Chem. 266:15525-15531(1991).

Images



Rat Cebpd Antibody (Center) (Cat. #AP20492c) western blot analysis in A549,Hela,NCI-H460,U-937,mouse NIH/3T3 cell line and rat lung,testis tissue lysates (35ug/lane).This demonstrates the Rat Cebpd antibody detected the Rat Cebpd protein (arrow).

Please note: All products are 'FOR RESEARCH USE ONLY. NOT FOR USE IN DIAGNOSTIC OR THERAPEUTIC PROCEDURES'.