

# ASB9 Antibody (N-term)

Affinity Purified Rabbit Polyclonal Antibody (Pab)  
Catalog # AP20482a

## Product Information

---

<b>Application</b>	WB, E
<b>Primary Accession</b>	<a href="#">Q96DX5</a>
<b>Reactivity</b>	Human
<b>Host</b>	Rabbit
<b>Clonality</b>	Polyclonal
<b>Isotype</b>	Rabbit IgG
<b>Calculated MW</b>	31858
<b>Antigen Region</b>	1-30

## Additional Information

---

<b>Gene ID</b>	140462
<b>Other Names</b>	Ankyrin repeat and SOCS box protein 9, ASB-9, ASB9
<b>Target/Specificity</b>	This ASB9 antibody is generated from rabbits immunized with a KLH conjugated synthetic peptide between 1-30 amino acids from the N-terminal region of human ASB9.
<b>Dilution</b>	WB~~1:1000 E~~Use at an assay dependent concentration.
<b>Format</b>	Purified polyclonal antibody supplied in PBS with 0.09% (W/V) sodium azide. This antibody is purified through a protein A column, followed by peptide affinity purification.
<b>Storage</b>	Maintain refrigerated at 2-8°C for up to 2 weeks. For long term storage store at -20°C in small aliquots to prevent freeze-thaw cycles.
<b>Precautions</b>	ASB9 Antibody (N-term) is for research use only and not for use in diagnostic or therapeutic procedures.

## Protein Information

---

<b>Name</b>	ASB9 {ECO:0000303   PubMed:20302626, ECO:0000312   HGNC:HGNC:17184}
<b>Function</b>	Substrate-recognition component of a cullin-5-RING E3 ubiquitin-protein ligase complex (ECS complex, also named CRL5 complex), which mediates the ubiquitination and subsequent proteasomal degradation of target proteins (PubMed: <a href="#">25654263</a> , PubMed: <a href="#">33268465</a> ). The ECS(ASB9) complex catalyzes ubiquitination of creatine kinases CKB and CKMT1A (PubMed: <a href="#">20302626</a> , PubMed: <a href="#">22418839</a> , PubMed: <a href="#">25654263</a> , PubMed: <a href="#">33268465</a> ).

**Cellular Location**

Mitochondrion.

**Tissue Location**

Predominantly expressed in testis, kidney, and liver.

**Background**

---

Substrate-recognition component of a SCF-like ECS (Elongin-Cullin-SOCS-box protein) E3 ubiquitin-protein ligase complex which mediates the ubiquitination and subsequent proteasomal degradation of target proteins. Recognizes at least two forms of creatine kinase, CKB and CKMT1A.

**References**

---

Fei X., et al. *Protein J.* 31:275-284(2012).

Mural R.J., et al. Submitted (JUL-2005) to the EMBL/GenBank/DDBJ databases.

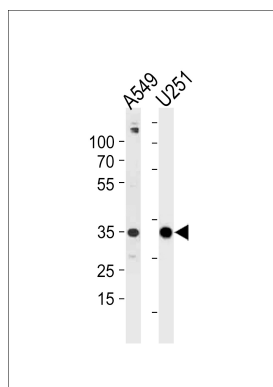
Kwon S., et al. *BMC Biol.* 8:23-23(2010).

Ota T., et al. *Nat. Genet.* 36:40-45(2004).

Bechtel S., et al. *BMC Genomics* 8:399-399(2007).

**Images**

---



ASB9 Antibody (N-term) (Cat. #AP20482a) western blot analysis in A549,U251 cell line lysates (35ug/lane).This demonstrates the ASB9 antibody detected the ASB9 protein (arrow).

Please note: All products are 'FOR RESEARCH USE ONLY. NOT FOR USE IN DIAGNOSTIC OR THERAPEUTIC PROCEDURES'.