

MATN2 Antibody (C-term)

Affinity Purified Rabbit Polyclonal Antibody (Pab)
Catalog # AP20481b

Product Information

Application	WB, IHC-P, E
Primary Accession	O00339
Reactivity	Human
Host	Rabbit
Clonality	Polyclonal
Isotype	Rabbit IgG
Antigen Region	732-760

Additional Information

Other Names	Matrilin-2, MATN2
Target/Specificity	This MATN2 antibody is generated from rabbits immunized with a KLH conjugated synthetic peptide between 732-760 amino acids of human MATN2.
Dilution	WB~~1:1000 IHC-P~~1:100~500 E~~Use at an assay dependent concentration.
Format	Purified polyclonal antibody supplied in PBS with 0.09% (W/V) sodium azide. This antibody is purified through a protein A column, followed by peptide affinity purification.
Storage	Maintain refrigerated at 2-8°C for up to 2 weeks. For long term storage store at -20°C in small aliquots to prevent freeze-thaw cycles.
Precautions	MATN2 Antibody (C-term) is for research use only and not for use in diagnostic or therapeutic procedures.

Protein Information

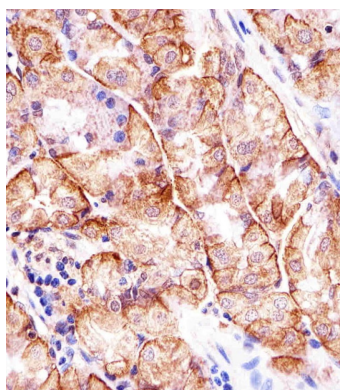
Background

Involved in matrix assembly (By similarity).

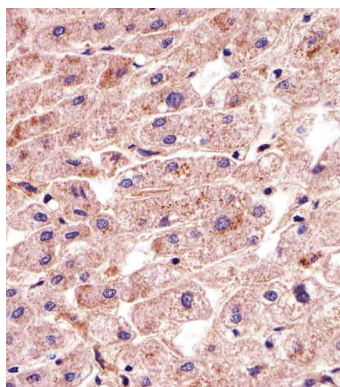
References

- Deak F., et al. J. Biol. Chem. 272:9268-9274(1997).
Muratoglu S., et al. Cytogenet. Cell Genet. 90:323-327(2000).
Clark H.F., et al. Genome Res. 13:2265-2270(2003).
Ota T., et al. Nat. Genet. 36:40-45(2004).

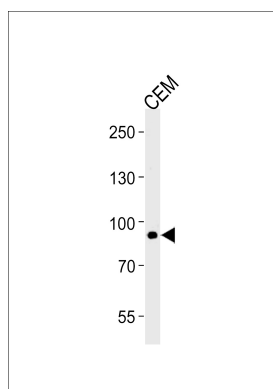
Images



Immunohistochemical analysis of paraffin-embedded H. stomach section using MATN2 Antibody (C-term)(Cat#AP20481B). AP20481B was diluted at 1:25 dilution. A undiluted biotinylated goat polyvalent antibody was used as the secondary, followed by DAB staining.



Immunohistochemical analysis of paraffin-embedded H. liver section using MATN2 Antibody (C-term)(Cat#AP20481B). AP20481B was diluted at 1:25 dilution. A undiluted biotinylated goat polyvalent antibody was used as the secondary, followed by DAB staining.



MATN2 Antibody (C-term) (Cat. #AP20481b) western blot analysis in CEM cell line lysates (35ug/lane). This demonstrates the MATN2 antibody detected the MATN2 protein (arrow).

Please note: All products are 'FOR RESEARCH USE ONLY. NOT FOR USE IN DIAGNOSTIC OR THERAPEUTIC PROCEDURES'.