

# CNO Antibody (Center)

Affinity Purified Rabbit Polyclonal Antibody (Pab)

Catalog # AP20464c

## Product Information

---

Application	WB, E
Primary Accession	<a href="#">Q9NUP1</a>
Reactivity	Human
Host	Rabbit
Clonality	Polyclonal
Isotype	Rabbit IgG
Clone Names	RB44448
Calculated MW	23351
Antigen Region	114-143

## Additional Information

---

Gene ID	55330
Other Names	Biogenesis of lysosome-related organelles complex 1 subunit 4, BLOC-1 subunit 4, Protein cappuccino homolog, BLOC1S4, CNO
Target/Specificity	This CNO antibody is generated from rabbits immunized with a KLH conjugated synthetic peptide between 114-143 amino acids from the Central region of human CNO.
Dilution	WB~~1:1000 E~~Use at an assay dependent concentration.
Format	Purified polyclonal antibody supplied in PBS with 0.09% (W/V) sodium azide. This antibody is purified through a protein A column, followed by peptide affinity purification.
Storage	Maintain refrigerated at 2-8°C for up to 2 weeks. For long term storage store at -20°C in small aliquots to prevent freeze-thaw cycles.
Precautions	CNO Antibody (Center) is for research use only and not for use in diagnostic or therapeutic procedures.

## Protein Information

---

Name	BLOC1S4
Synonyms	CNO
Function	Component of the BLOC-1 complex, a complex that is required for normal biogenesis of lysosome-related organelles (LRO), such as platelet dense

granules and melanosomes. In concert with the AP-3 complex, the BLOC-1 complex is required to target membrane protein cargos into vesicles assembled at cell bodies for delivery into neurites and nerve terminals. The BLOC-1 complex, in association with SNARE proteins, is also proposed to be involved in neurite extension. Plays a role in intracellular vesicle trafficking.

**Cellular Location**

Cytoplasm.

## Background

---

The BLOC-1 complex is required for normal biogenesis of lysosome-related organelles, such as platelet dense granules and melanosomes. Plays a role in intracellular vesicle trafficking (By similarity).

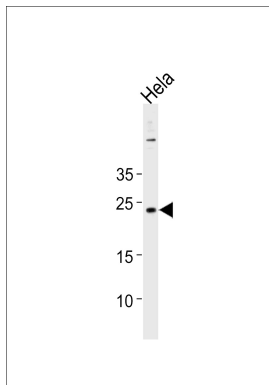
## References

---

Ota T., et al. Nat. Genet. 36:40-45(2004).  
Hillier L.W., et al. Nature 434:724-731(2005).

## Images

---



CNO Antibody (Center) (Cat. #AP20464c) western blot analysis in HeLa cell line lysates (35ug/lane). This demonstrates the CNO antibody detected the CNO protein (arrow).

Please note: All products are 'FOR RESEARCH USE ONLY. NOT FOR USE IN DIAGNOSTIC OR THERAPEUTIC PROCEDURES'.