

ECE2 Antibody (Center)

Affinity Purified Rabbit Polyclonal Antibody (Pab)

Catalog # AP20460c

Product Information

Application	WB, IHC-P, E
Primary Accession	O60344
Other Accession	Q80Z60 , Q10711
Reactivity	Human, Mouse
Predicted	Bovine, Mouse
Host	Rabbit
Clonality	Polyclonal
Isotype	Rabbit IgG
Antigen Region	551-579

Additional Information

Other Names	Endothelin-converting enzyme 2, ECE-2, Methyltransferase-like region, 211-, Endothelin-converting enzyme 2 region, ECE2, KIAA0604
Target/Specificity	This ECE2 antibody is generated from rabbits immunized with a KLH conjugated synthetic peptide between 551-579 amino acids from the Central region of human ECE2.
Dilution	WB~~1:1000 IHC-P~~1:100~500 E~~Use at an assay dependent concentration.
Format	Purified polyclonal antibody supplied in PBS with 0.09% (W/V) sodium azide. This antibody is purified through a protein A column, followed by peptide affinity purification.
Storage	Maintain refrigerated at 2-8°C for up to 2 weeks. For long term storage store at -20°C in small aliquots to prevent freeze-thaw cycles.
Precautions	ECE2 Antibody (Center) is for research use only and not for use in diagnostic or therapeutic procedures.

Protein Information

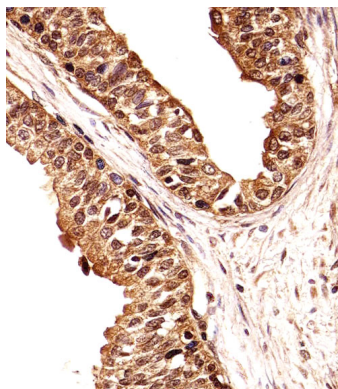
Background

Converts big endothelin-1 to endothelin-1. Also involved in the processing of various neuroendocrine peptides, including neurotensin, angiotensin I, substance P, proenkephalin-derived peptides, and prodynorphin-derived peptides. May limit beta-amyloid peptide accumulation in brain. May also have methyltransferase activity.

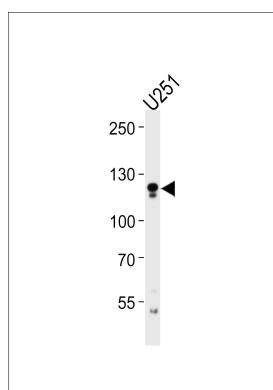
References

Lorenzo M.-N., et al. Biochim. Biophys. Acta 1522:46-52(2001).
Funke-Kaiser H., et al. Submitted (JUN-2002) to the EMBL/GenBank/DDBJ databases.
Nagase T., et al. DNA Res. 5:31-39(1998).
Clark H.F., et al. Genome Res. 13:2265-2270(2003).
Muzny D.M., et al. Nature 440:1194-1198(2006).

Images



Immunohistochemical analysis of paraffin-embedded H. prostate section using ECE2 Antibody (Center)(Cat#AP20460C). AP20460C was diluted at 1:25 dilution. A undiluted biotinylated goat polyvalent antibody was used as the secondary, followed by DAB staining.



ECE2 Antibody (Center) (Cat. #AP20460c) western blot analysis in U251 cell line lysates (35ug/lane). This demonstrates the ECE2 antibody detected the ECE2 protein (arrow).

Please note: All products are 'FOR RESEARCH USE ONLY. NOT FOR USE IN DIAGNOSTIC OR THERAPEUTIC PROCEDURES'.