

RPLP0P6 Antibody (N-term)

Affinity Purified Rabbit Polyclonal Antibody (Pab)

Catalog # AP20453a

Product Information

Application	WB, IF, IHC-P, E
Primary Accession	Q8NHW5
Other Accession	P19945 , Q29214 , P14869 , P05388 , Q9PV90 , P47826 , Q95140
Reactivity	Human
Predicted	Bovine, Chicken, Zebrafish, Mouse, Pig, Rat
Host	Rabbit
Clonality	Polyclonal
Isotype	Rabbit IgG
Calculated MW	34364
Antigen Region	1-30

Additional Information

Other Names	60S acidic ribosomal protein P0-like, RPLP0P6
Target/Specificity	This RPLP0P6 antibody is generated from rabbits immunized with a KLH conjugated synthetic peptide between 1-30 amino acids from the N-terminal region of human RPLP0P6.
Dilution	WB~~1:1000 IF~~1:25 IHC-P~~1:100~500 E~~Use at an assay dependent concentration.
Format	Purified polyclonal antibody supplied in PBS with 0.09% (W/V) sodium azide. This antibody is purified through a protein A column, followed by peptide affinity purification.
Storage	Maintain refrigerated at 2-8°C for up to 2 weeks. For long term storage store at -20°C in small aliquots to prevent freeze-thaw cycles.
Precautions	RPLP0P6 Antibody (N-term) is for research use only and not for use in diagnostic or therapeutic procedures.

Protein Information

Name	RPLP0P6
Function	Ribosomal protein P0 is the functional equivalent of E.coli protein L10.

Background

Ribosomal protein P0 is the functional equivalent of E.coli protein L10 (By similarity).

References

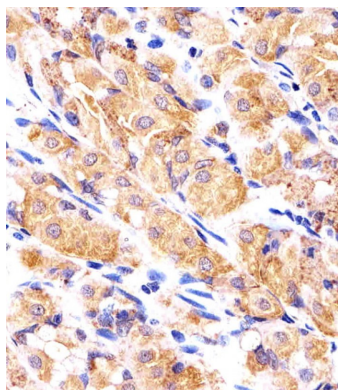
Gorry M.C., et al. Submitted (NOV-2001) to the EMBL/GenBank/DDBJ databases.

Li W.B., et al. Submitted (JUL-2004) to the EMBL/GenBank/DDBJ databases.

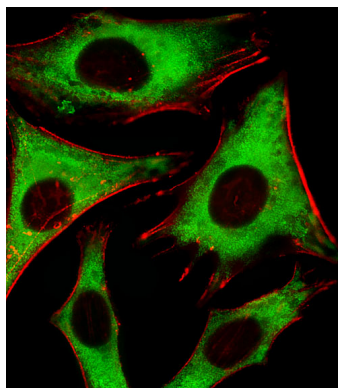
Mural R.J., et al. Submitted (SEP-2005) to the EMBL/GenBank/DDBJ databases.

Gauci S., et al. Anal. Chem. 81:4493-4501(2009).

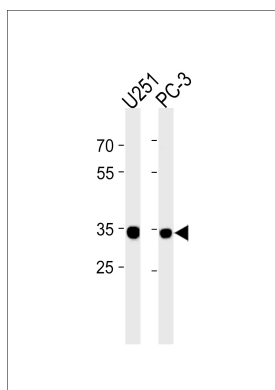
Images



Immunohistochemical analysis of paraffin-embedded H. stomach section using RPLP0P6 Antibody (N-term)(Cat#AP20453a). AP20453a was diluted at 1:25 dilution. A undiluted biotinylated goat polyvalent antibody was used as the secondary, followed by DAB staining.



Fluorescent image of Hela cells stained with RPLP0P6 Antibody (N-term)(Cat#AP20453a). AP20453a was diluted at 1:25 dilution. An Alexa Fluor 488-conjugated goat anti-rabbit IgG at 1:400 dilution was used as the secondary antibody (green). Cytoplasmic actin was counterstained with Alexa Fluor® 555 conjugated with Phalloidin (red).



RPLP0P6 Antibody (N-term) (Cat. #AP20453a) western blot analysis in U251,PC-3 cell line lysates (35ug/lane).This demonstrates the RPLP0P6 antibody detected the RPLP0P6 protein (arrow).

Please note: All products are 'FOR RESEARCH USE ONLY. NOT FOR USE IN DIAGNOSTIC OR THERAPEUTIC PROCEDURES'.