

C2orf47 Antibody (C-term)

Affinity Purified Rabbit Polyclonal Antibody (Pab)

Catalog # AP20447b

Product Information

Application	WB, E
Primary Accession	Q8WWC4
Other Accession	Q6AY04 , Q8BHE8 , A3KN05
Reactivity	Human, Rat, Mouse
Predicted	Bovine, Mouse, Rat
Host	Rabbit
Clonality	Polyclonal
Isotype	Rabbit IgG
Calculated MW	32545
Antigen Region	190-219

Additional Information

Gene ID	79568
Other Names	Uncharacterized protein C2orf47, mitochondrial, C2orf47
Target/Specificity	This C2orf47 antibody is generated from rabbits immunized with a KLH conjugated synthetic peptide between 190-219 amino acids from the C-terminal region of human C2orf47.
Dilution	WB~~1:1000 E~~Use at an assay dependent concentration.
Format	Purified polyclonal antibody supplied in PBS with 0.09% (W/V) sodium azide. This antibody is purified through a protein A column, followed by peptide affinity purification.
Storage	Maintain refrigerated at 2-8°C for up to 2 weeks. For long term storage store at -20°C in small aliquots to prevent freeze-thaw cycles.
Precautions	C2orf47 Antibody (C-term) is for research use only and not for use in diagnostic or therapeutic procedures.

Protein Information

Name	MAIP1 {ECO:0000303 PubMed:27642048, ECO:0000312 HGNC:HGNC:26198}
Function	Promotes sorting of SMDT1/EMRE in mitochondria by ensuring its maturation (PubMed: 27642048). Interacts with the transit peptide region of SMDT1/EMRE precursor protein in the mitochondrial matrix, leading to

protect it against protein degradation by YME1L1, thereby ensuring SMDT1/EMRE maturation by the mitochondrial processing peptidase (PMPCA and PMPCB) (PubMed:[27642048](#)).

Cellular Location

Mitochondrion matrix

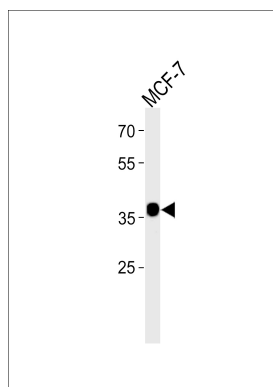
Background

The function of the C2orf47 protein is currently unknown.

References

Ota T., et al. Nat. Genet. 36:40-45(2004).
Hillier L.W., et al. Nature 434:724-731(2005).
Mural R.J., et al. Submitted (JUL-2005) to the EMBL/GenBank/DDBJ databases.
Bechtel S., et al. BMC Genomics 8:399-399(2007).
Burkard T.R., et al. BMC Syst. Biol. 5:17-17(2011).

Images



C2orf47 Antibody (C-term) (Cat. #AP20447b) western blot analysis in MCF-7 cell line lysates (35ug/lane). This demonstrates the C2orf47 antibody detected the C2orf47 protein (arrow).

Please note: All products are 'FOR RESEARCH USE ONLY. NOT FOR USE IN DIAGNOSTIC OR THERAPEUTIC PROCEDURES'.