

LILRA3 Antibody (C-term)

Affinity Purified Rabbit Polyclonal Antibody (Pab)

Catalog # AP20443b

Product Information

Application	WB, E
Primary Accession	Q8N6C8
Reactivity	Human
Host	Rabbit
Clonality	Polyclonal
Isotype	Rabbit IgG
Calculated MW	47472
Antigen Region	350-378

Additional Information

Gene ID	11026
Other Names	Leukocyte immunoglobulin-like receptor subfamily A member 3, CD85 antigen-like family member E, Immunoglobulin-like transcript 6, ILT-6, Leukocyte immunoglobulin-like receptor 4, LIR-4, Monocyte inhibitory receptor HM43/HM31, CD85e, LILRA3, ILT6, LIR4
Target/Specificity	This LILRA3 antibody is generated from rabbits immunized with a KLH conjugated synthetic peptide between 350-378 amino acids from the C-terminal region of human LILRA3.
Dilution	WB~~1:1000 E~~Use at an assay dependent concentration.
Format	Purified polyclonal antibody supplied in PBS with 0.09% (W/V) sodium azide. This antibody is purified through a protein A column, followed by peptide affinity purification.
Storage	Maintain refrigerated at 2-8°C for up to 2 weeks. For long term storage store at -20°C in small aliquots to prevent freeze-thaw cycles.
Precautions	LILRA3 Antibody (C-term) is for research use only and not for use in diagnostic or therapeutic procedures.

Protein Information

Name	LILRA3
Synonyms	ILT6, LIR4
Function	Acts as a soluble receptor for class I MHC antigens. Binds both classical and

non-classical HLA class I molecules but with reduced affinities compared to LILRB1 or LILRB2. Binds with high affinity to the surface of monocytes, leading to abolish LPS-induced TNF-alpha production by monocytes.

Cellular Location

Secreted.

Tissue Location

Detected in B-cells, and at lower levels in natural killer (NK) cells. Detected in peripheral blood monocytes and lung

Background

May act as soluble receptor for class I MHC antigens.

References

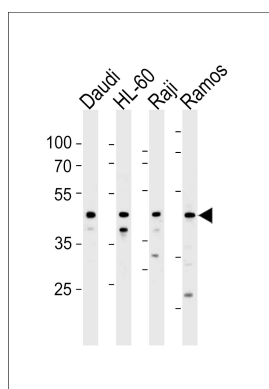
Zhang Z., et al. Protein Sci. 13:2819-2824(2004).

Arm J.P., et al. J. Immunol. 159:2342-2349(1997).

Borges L., et al. J. Immunol. 159:5192-5196(1997).

Norman P.J., et al. Immunogenetics 55:165-171(2003).

Images



LILRA3 Antibody (C-term) (Cat. #AP20443b) western blot analysis in Daudi,HL-60,Raji and Ramos cell line lysates (35ug/lane).This demonstrates the LILRA3 antibody detected the LILRA3 protein (arrow).

Please note: All products are 'FOR RESEARCH USE ONLY. NOT FOR USE IN DIAGNOSTIC OR THERAPEUTIC PROCEDURES'.