

CCNB1 Antibody (C-term T321)

Affinity Purified Rabbit Polyclonal Antibody (Pab)
Catalog # AP20411b

Product Information

Application	WB, E
Primary Accession	P14635
Other Accession	P30276 , Q4R7A8 , O95067 , O77689 , P30277 , P24860 , Q08301
Reactivity	Human
Predicted	Hamster, Mouse, Rat, Bovine, Monkey
Host	Rabbit
Clonality	Polyclonal
Isotype	Rabbit IgG
Clone Names	RB43001
Calculated MW	48337
Antigen Region	299-326

Additional Information

Gene ID	891
Other Names	G2/mitotic-specific cyclin-B1, CCNB1, CCNB
Target/Specificity	This CCNB1 antibody is generated from rabbits immunized with a KLH conjugated synthetic peptide between 299-326 amino acids from the C-terminal region of human CCNB1.
Dilution	WB~~1:1000 E~~Use at an assay dependent concentration.
Format	Purified polyclonal antibody supplied in PBS with 0.09% (W/V) sodium azide. This antibody is purified through a protein A column, followed by peptide affinity purification.
Storage	Maintain refrigerated at 2-8°C for up to 2 weeks. For long term storage store at -20°C in small aliquots to prevent freeze-thaw cycles.
Precautions	CCNB1 Antibody (C-term T321) is for research use only and not for use in diagnostic or therapeutic procedures.

Protein Information

Name	CCNB1
Synonyms	CCNB
Function	Essential for the control of the cell cycle at the G2/M (mitosis) transition.

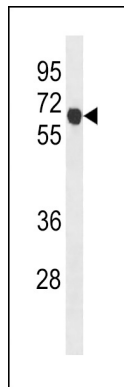
Cellular Location

Cytoplasm. Nucleus. Cytoplasm, cytoskeleton, microtubule organizing center, centrosome

Background

Essential for the control of the cell cycle at the G2/M (mitosis) transition.

Images



CCNB1 Antibody (C-term T321) (Cat. #AP20411b) western blot analysis in K562 cell line lysates (35ug/lane). This demonstrates the CCNB1 antibody detected the CCNB1 protein (arrow).

Please note: All products are 'FOR RESEARCH USE ONLY. NOT FOR USE IN DIAGNOSTIC OR THERAPEUTIC PROCEDURES'.