

M CCNB1 Antibody (Center S123/S125)

Affinity Purified Rabbit Polyclonal Antibody (Pab)

Catalog # AP20408c

Product Information

Application	WB, IHC-P, E
Primary Accession	P24860
Other Accession	Q08301
Reactivity	Mouse
Predicted	Hamster
Host	Rabbit
Clonality	Polyclonal
Isotype	Rabbit IgG
Calculated MW	48052
Antigen Region	103-130

Additional Information

Gene ID	268697
Other Names	G2/mitotic-specific cyclin-B1, Ccnb1, Ccn-2, Ccnb1-rs13, Cycb, Cycb1
Target/Specificity	This Mouse CCNB1 antibody is generated from rabbits immunized with a KLH conjugated synthetic peptide between 103-130 amino acids from the Central region of mouse CCNB1.
Dilution	WB~~1:1000 IHC-P~~1:100~500 E~~Use at an assay dependent concentration.
Format	Purified polyclonal antibody supplied in PBS with 0.09% (W/V) sodium azide. This antibody is purified through a protein A column, followed by peptide affinity purification.
Storage	Maintain refrigerated at 2-8°C for up to 2 weeks. For long term storage store at -20°C in small aliquots to prevent freeze-thaw cycles.
Precautions	M CCNB1 Antibody (Center S123/S125) is for research use only and not for use in diagnostic or therapeutic procedures.

Protein Information

Name	Ccnb1
Synonyms	Ccn-2, Ccnb1-rs13, Cycb, Cycb1
Function	Essential for the control of the cell cycle at the G2/M (mitosis) transition.

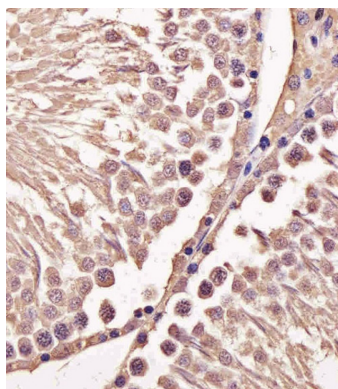
Cellular Location

Cytoplasm. Nucleus. Cytoplasm, cytoskeleton, microtubule organizing center, centrosome

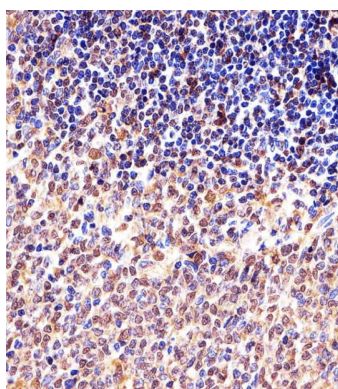
Background

Essential for the control of the cell cycle at the G2/M (mitosis) transition.

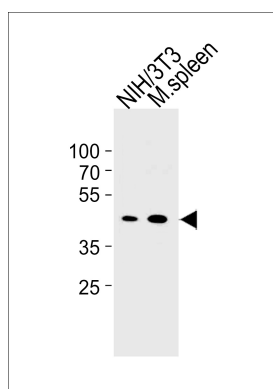
Images



Immunohistochemical analysis of paraffin-embedded M. testis section using M CCNB1 Antibody (Center S123/S125)(Cat#AP20408c). AP20408c was diluted at 1:25 dilution. A undiluted biotinylated goat polyvalent antibody was used as the secondary, followed by DAB staining.



Immunohistochemical analysis of paraffin-embedded M. spleen section using M CCNB1 Antibody (Center S123/S125)(Cat#AP20408c). AP20408c was diluted at 1:25 dilution. A undiluted biotinylated goat polyvalent antibody was used as the secondary, followed by DAB staining.



Mouse CCNB1 Antibody (Center S123/S125)(Cat. #AP20408c) western blot analysis in mouse NIH/3T3 cell line and mouse spleen tissue lysates (35ug/lane). This demonstrates the mouse CCNB1 antibody detected the mouse CCNB1 protein (arrow).

Please note: All products are 'FOR RESEARCH USE ONLY. NOT FOR USE IN DIAGNOSTIC OR THERAPEUTIC PROCEDURES'.