

GTDC1 Antibody (Center)

Affinity Purified Rabbit Polyclonal Antibody (Pab)

Catalog # AP20381c

Product Information

Application	WB, E
Primary Accession	Q4AE62
Reactivity	Human
Host	Rabbit
Clonality	Polyclonal
Isotype	Rabbit IgG
Clone Names	RB42880
Calculated MW	52597
Antigen Region	278-304

Additional Information

Gene ID	79712
Other Names	Glycosyltransferase-like domain-containing protein 1, Mat-Xa, GTDC1
Target/Specificity	This GTDC1 antibody is generated from rabbits immunized with a KLH conjugated synthetic peptide between 278-304 amino acids from the Central region of human GTDC1.
Dilution	WB~~1:1000 E~~Use at an assay dependent concentration.
Format	Purified polyclonal antibody supplied in PBS with 0.09% (W/V) sodium azide. This antibody is purified through a protein A column, followed by peptide affinity purification.
Storage	Maintain refrigerated at 2-8°C for up to 2 weeks. For long term storage store at -20°C in small aliquots to prevent freeze-thaw cycles.
Precautions	GTDC1 Antibody (Center) is for research use only and not for use in diagnostic or therapeutic procedures.

Protein Information

Name	GTDC1 {ECO:0000303 PubMed:15068588, ECO:0000312 HGNC:HGNC:20887}
Function	Glycosyltransferase that specifically catalyzes mannosylation of cytoplasmic tRNA(Asp) modified with queuosine at position 34 (queuosine(34)) (PubMed: 37992713). Mannosylates the cyclopentene moiety of queuosine(34) in tRNA(Asp) to form mannosyl-queuosine(34) (PubMed: 37992713).

Mannosylation of queuosine(34) in tRNA(Asp) is required to slow-down elongation at cognate codons, GAC and GAU, thereby regulating protein translation (PubMed:[37992713](#)).

Cellular Location

Cytoplasm. Nucleus

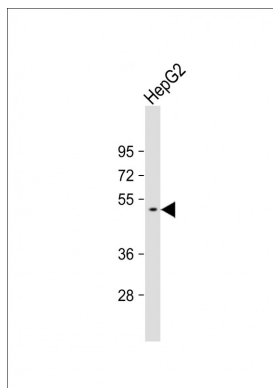
Tissue Location

Ubiquitous. Expressed at high levels in the lung, brain, spleen, testis, placenta, ovary, pancreas, spleen and peripheral blood leukocytes. Expressed at low level in the colon, small intestine, kidney, skeletal muscle and thymus. Expressed at high level in colon adenocarcinoma.

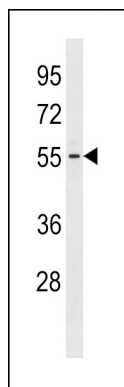
Background

The function of GTDC1 (glycosyltransferase like domain containing 1) remains unknown.

Images



Anti-GTDC1 Antibody (Center) at 1:1000 dilution + HepG2 whole cell lysate Lysates/proteins at 20 µg per lane. Secondary Goat Anti-Rabbit IgG, (H+L), Peroxidase conjugated at 1/10000 dilution. Predicted band size : 53 kDa Blocking/Dilution buffer: 5% NFDM/TBST.



GTDC1 Antibody (Center) (Cat. #AP20381c) western blot analysis in Jurkat cell line lysates (35ug/lane). This demonstrates the GTDC1 antibody detected the GTDC1 protein (arrow).

Please note: All products are 'FOR RESEARCH USE ONLY. NOT FOR USE IN DIAGNOSTIC OR THERAPEUTIC PROCEDURES'.