

LIMK2 Antibody (C-term)

Affinity Purified Rabbit Polyclonal Antibody (Pab)

Catalog # AP20356b

Product Information

Application	WB, IHC-P, E
Primary Accession	P53671
Other Accession	Q32L23
Reactivity	Human
Predicted	Bovine
Host	Rabbit
Clonality	Polyclonal
Isotype	Rabbit IgG
Clone Names	RB42813
Calculated MW	72232
Antigen Region	570-599

Additional Information

Gene ID	3985
Other Names	LIM domain kinase 2, LIMK-2, LIMK2
Target/Specificity	This LIMK2 antibody is generated from rabbits immunized with a KLH conjugated synthetic peptide between 570-599 amino acids from the C-terminal region of human LIMK2.
Dilution	WB~~1:1000 IHC-P~~1:100~500 E~~Use at an assay dependent concentration.
Format	Purified polyclonal antibody supplied in PBS with 0.09% (W/V) sodium azide. This antibody is purified through a protein A column, followed by peptide affinity purification.
Storage	Maintain refrigerated at 2-8°C for up to 2 weeks. For long term storage store at -20°C in small aliquots to prevent freeze-thaw cycles.
Precautions	LIMK2 Antibody (C-term) is for research use only and not for use in diagnostic or therapeutic procedures.

Protein Information

Name	LIMK2
Function	Serine/threonine-protein kinase that plays an essential role in the regulation of actin filament dynamics (PubMed: 10436159 , PubMed: 11018042). Acts downstream of several Rho family GTPase signal

transduction pathways (PubMed:[10436159](#), PubMed:[11018042](#)). Involved in astral microtubule organization and mitotic spindle orientation during early stages of mitosis by mediating phosphorylation of TPPP (PubMed:[22328514](#)). Displays serine/threonine-specific phosphorylation of myelin basic protein and histone (MBP) in vitro (PubMed:[8537403](#)). Suppresses ciliogenesis via multiple pathways; phosphorylation of CFL1, suppression of directional trafficking of ciliary vesicles to the ciliary base, and by facilitating YAP1 nuclear localization where it acts as a transcriptional corepressor of the TEAD4 target genes AURKA and PLK1 (PubMed:[25849865](#)).

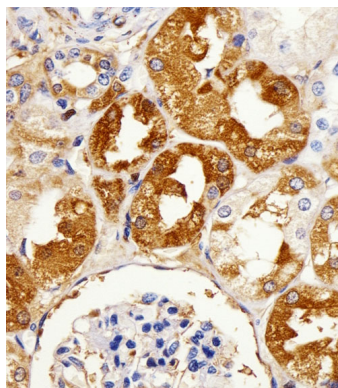
Cellular Location

Cytoplasm, cytoskeleton, spindle. Cytoplasm, cytoskeleton, microtubule organizing center, centrosome [Isoform LIMK2b]: Cytoplasm. Cytoplasm, perinuclear region. Nucleus Note=Mainly present in the cytoplasm and is scarcely translocated to the nucleus.

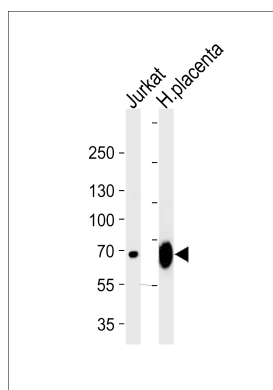
Background

Displays serine/threonine-specific phosphorylation of myelin basic protein and histone (MBP) in vitro.

Images



Immunohistochemical analysis of paraffin-embedded H.kidney section using LIMK2 Antibody (C-term)(Cat#AP20356b). AP20356b was diluted at 1:25 dilution. A peroxidase-conjugated goat anti-rabbit IgG at 1:400 dilution was used as the secondary antibody, followed by DAB staining.



Western blot analysis of lysates from Jurkat cell line and human placenta tissue lysate (from left to right), using LIMK2 Antibody (C-term) (Cat. #AP20356b). AP20356b was diluted at 1:1000 at each lane. A goat anti-rabbit IgG H&L(HRP) at 1:5000 dilution was used as the secondary antibody. Lysate at 35ug per lane.

Please note: All products are 'FOR RESEARCH USE ONLY. NOT FOR USE IN DIAGNOSTIC OR THERAPEUTIC PROCEDURES'.