

APBB2 Antibody (Center)

Affinity Purified Rabbit Polyclonal Antibody (Pab)

Catalog # AP20346c

Product Information

Application	WB, E
Primary Accession	Q92870
Other Accession	Q9DBR4
Reactivity	Human
Predicted	Mouse
Host	Rabbit
Clonality	Polyclonal
Isotype	Rabbit IgG
Clone Names	RB42741
Calculated MW	83374
Antigen Region	216-244

Additional Information

Gene ID	323
Other Names	Amyloid beta A4 precursor protein-binding family B member 2, Protein Fe65-like 1, APBB2, FE65L, FE65L1
Target/Specificity	This APBB2 antibody is generated from rabbits immunized with a KLH conjugated synthetic peptide between 216-244 amino acids from the Central region of human APBB2.
Dilution	WB~~1:1000 E~~Use at an assay dependent concentration.
Format	Purified polyclonal antibody supplied in PBS with 0.09% (W/V) sodium azide. This antibody is purified through a protein A column, followed by peptide affinity purification.
Storage	Maintain refrigerated at 2-8°C for up to 2 weeks. For long term storage store at -20°C in small aliquots to prevent freeze-thaw cycles.
Precautions	APBB2 Antibody (Center) is for research use only and not for use in diagnostic or therapeutic procedures.

Protein Information

Name	APBB2 (HGNC:582)
Function	Plays a role in the maintenance of lens transparency, and may also play a role in muscle cell strength (By similarity). Involved in hippocampal neurite

branching and neuromuscular junction formation, as a result plays a role in spatial memory functioning (By similarity). Activates transcription of APP (PubMed:[14527950](#)).

Cellular Location

Endoplasmic reticulum. Golgi apparatus. Early endosome

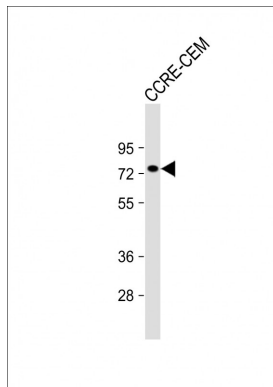
Tissue Location

Widely expressed..

Background

May modulate the internalization of beta-amyloid precursor protein.

Images



Anti-APBB2 Antibody (Center) at 1:1000 dilution + CCRE-CEM whole cell lysate Lysates/proteins at 20 µg per lane. Secondary Goat Anti-Rabbit IgG, (H+L), Peroxidase conjugated at 1/10000 dilution. Predicted band size : 83 kDa Blocking/Dilution buffer: 5% NFDM/TBST.

Please note: All products are 'FOR RESEARCH USE ONLY. NOT FOR USE IN DIAGNOSTIC OR THERAPEUTIC PROCEDURES'.