

CSH1 Antibody (N-term)

Affinity Purified Rabbit Polyclonal Antibody (Pab)

Catalog # AP20176a

Product Information

Application	WB, E
Primary Accession	P01243
Other Accession	NP_072167.1
Reactivity	Human
Host	Rabbit
Clonality	Polyclonal
Isotype	Rabbit IgG
Clone Names	RB41664
Antigen Region	42-70

Additional Information

Other Names	CSH1; Chorionic somatomammotropin hormone; Lactogen; Placental lactogen
Target/Specificity	This CSH1 antibody is generated from rabbits immunized with a KLH conjugated synthetic peptide between 42-70 amino acids from the N-terminal region of human CSH1.
Dilution	WB~~1:1000 E~~Use at an assay dependent concentration.
Format	Purified polyclonal antibody supplied in PBS with 0.09% (W/V) sodium azide. This antibody is purified through a protein A column, followed by peptide affinity purification.
Storage	Maintain refrigerated at 2-8°C for up to 2 weeks. For long term storage store at -20°C in small aliquots to prevent freeze-thaw cycles.
Precautions	CSH1 Antibody (N-term) is for research use only and not for use in diagnostic or therapeutic procedures.

Protein Information

Background

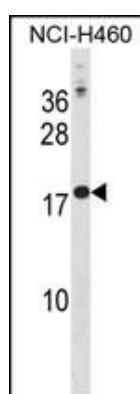
The protein encoded by this gene is a member of the somatotropin/prolactin family of hormones and plays an important role in growth control. The gene is located at the growth hormone locus on chromosome 17 along with four other related genes in the same transcriptional orientation; an arrangement which is thought to have evolved by a series of gene duplications. Although the five genes share a remarkably high degree of sequence identity, they are expressed selectively in different tissues. Alternative splicing generates additional isoforms of each of the five growth hormones, leading to further diversity and potential for

specialization. This particular family member is expressed mainly in the placenta and utilizes multiple transcription initiation sites. Expression of the identical mature proteins for chorionic somatomammotropin hormones 1 and 2 is upregulated during development, although the ratio of 1 to 2 increases by term. Mutations in this gene result in placental lactogen deficiency and Silver-Russell syndrome. [provided by RefSeq].

References

Voorhees, J.L., et al. J. Biol. Chem. 285(26):20022-20030(2010)
Mannik, J., et al. J. Clin. Endocrinol. Metab. 95(5):2433-2442(2010)
Davila, S., et al. Genes Immun. 11(3):232-238(2010)
Varvarigou, A.A., et al. J Perinat Med 37(4):364-369(2009)
Chen, Y., et al. Cancer Res. 68(23):9729-9734(2008)

Images



CSH1 Antibody (N-term) (Cat. #AP20176a) western blot analysis in NCI-H460 cell line lysates (35ug/lane). This demonstrates the CSH1 antibody detected the CSH1 protein (arrow).

Please note: All products are 'FOR RESEARCH USE ONLY. NOT FOR USE IN DIAGNOSTIC OR THERAPEUTIC PROCEDURES'.