

FUNDC2 Antibody (C-term)

Affinity Purified Rabbit Polyclonal Antibody (Pab)

Catalog # AP20155b

Product Information

Application	WB, E
Primary Accession	Q9BWH2
Other Accession	Q864V5 , Q9D6K8 , Q8MJN0 , NP_076423.2
Reactivity	Human, Rat, Mouse
Predicted	Bovine, Pig
Host	Rabbit
Clonality	Polyclonal
Isotype	Rabbit IgG
Clone Names	RB40833
Calculated MW	20676
Antigen Region	122-150

Additional Information

Gene ID	65991
Other Names	FUN14 domain-containing protein 2, Cervical cancer proto-oncogene 3 protein, HCC-3, Hepatitis C virus core-binding protein 6, FUNDC2, HCBP6
Target/Specificity	This FUNDC2 antibody is generated from rabbits immunized with a KLH conjugated synthetic peptide between 122-150 amino acids from the C-terminal region of human FUNDC2.
Dilution	WB~~1:1000 E~~Use at an assay dependent concentration.
Format	Purified polyclonal antibody supplied in PBS with 0.05% (V/V) Proclin 300. This antibody is prepared by Saturated Ammonium Sulfate (SAS) precipitation followed by dialysis against PBS.
Storage	Maintain refrigerated at 2-8°C for up to 2 weeks. For long term storage store at -20°C in small aliquots to prevent freeze-thaw cycles.
Precautions	FUNDC2 Antibody (C-term) is for research use only and not for use in diagnostic or therapeutic procedures.

Protein Information

Name	FUNDC2 (HGNC:24925)
Synonyms	HCBP6

Function	Binds directly and specifically 1,2-Diacyl-sn-glycero-3-phospho-(1'-myo-inositol-3',4',5'-bisphosphate) (PIP3) leading to the recruitment of PIP3 to mitochondria and may play a role in the regulation of the platelet activation via AKT/GSK3B/cGMP signaling pathways (PubMed: 29786068). May act as transcription factor that regulates SREBP1 (isoform SREBP-1C) expression in order to modulate triglyceride (TG) homeostasis in hepatocytes (PubMed: 25855506 , PubMed: 29187281).
Cellular Location	Mitochondrion outer membrane; Multi-pass membrane protein. Nucleus
Tissue Location	Highly expressed in platelets (at protein level).

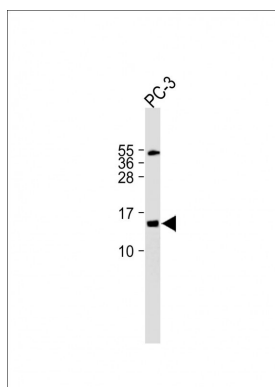
Background

The function of this protein is unknown.

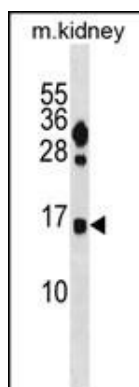
References

Olsen, J.V., et al. Cell 127(3):635-648(2006)
 Li, K., et al. Zhonghua Shi Yan He Lin Chuang Bing Du Xue Za Zhi 16(4):351-353(2002)
 Simpson, J.C., et al. EMBO Rep. 1(3):287-292(2000)

Images



All lanes : Anti-FUNDC2 Antibody (C-term) at 1:500 dilution Lane 1: PC-3 whole cell lysate Lysates/proteins at 20 µg per lane. Secondary Goat Anti-Rabbit IgG, (H+L), Peroxidase conjugated (ASP1615) at 1/15000 dilution. Observed band size : 15kDa Blocking/Dilution buffer: 5% NFDM/TBST.



FUNDC2 Antibody (C-term) (Cat. #AP20155b) western blot analysis in mouse kidney tissue lysates (35ug/lane). This demonstrates the FUNDC2 antibody detected the FUNDC2 protein (arrow).

Please note: All products are 'FOR RESEARCH USE ONLY. NOT FOR USE IN DIAGNOSTIC OR THERAPEUTIC PROCEDURES'.