

RALYL Antibody (N-term)

Affinity Purified Rabbit Polyclonal Antibody (Pab)

Catalog # AP20112a

Product Information

Application	WB, E
Primary Accession	Q86SE5
Other Accession	Q08DJ0 , NP_776247.3
Reactivity	Human
Predicted	Bovine
Host	Rabbit
Clonality	Polyclonal
Isotype	Rabbit IgG
Clone Names	RB42692
Calculated MW	32331
Antigen Region	76-104

Additional Information

Gene ID	138046
Other Names	RNA-binding Raly-like protein, hRALYL, Heterogeneous nuclear ribonucleoprotein C-like 3, hnRNP core protein C-like 3, RALYL, HNRPCL3
Target/Specificity	This RALYL antibody is generated from rabbits immunized with a KLH conjugated synthetic peptide between 76-104 amino acids from the N-terminal region of human RALYL.
Dilution	WB~~1:1000 E~~Use at an assay dependent concentration.
Format	Purified polyclonal antibody supplied in PBS with 0.09% (W/V) sodium azide. This antibody is purified through a protein A column, followed by peptide affinity purification.
Storage	Maintain refrigerated at 2-8°C for up to 2 weeks. For long term storage store at -20°C in small aliquots to prevent freeze-thaw cycles.
Precautions	RALYL Antibody (N-term) is for research use only and not for use in diagnostic or therapeutic procedures.

Protein Information

Name	RALYL
Synonyms	HNRPCL3

Tissue Location

Widely expressed, with highest levels in brain.

Background

The function of this protein is unknown.

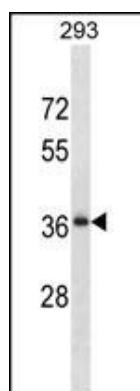
References

Xin, X., et al. Genome Res. 19(7):1262-1269(2009)

Lamesch, P., et al. Genomics 89(3):307-315(2007)

Ji, C.N., et al. Mol. Biol. Rep. 30(1):61-67(2003)

Images



RALYL Antibody (N-term) (Cat. #AP20112a) western blot analysis in 293 cell line lysates (35ug/lane). This demonstrates the RALYL antibody detected the RALYL protein (arrow).

Citations

- [Acquired genetic alterations in tumor cells dictate the development of high-risk neuroblastoma and clinical outcomes.](#)

Please note: All products are 'FOR RESEARCH USE ONLY. NOT FOR USE IN DIAGNOSTIC OR THERAPEUTIC PROCEDURES'.