

BRAP Antibody(N-term)

Affinity Purified Rabbit Polyclonal Antibody (Pab)

Catalog # AP19664a

Product Information

Application	WB, E
Primary Accession	Q7Z569
Other Accession	NP_006759.3
Reactivity	Human
Host	Rabbit
Clonality	Polyclonal
Isotype	Rabbit IgG
Clone Names	RB41572
Calculated MW	67305
Antigen Region	66-95

Additional Information

Gene ID	8315
Other Names	BRCA1-associated protein, 632-, BRAP2, Impedes mitogenic signal propagation, IMP, RING finger protein 52, Renal carcinoma antigen NY-REN-63, BRAP (HGNC:1099), RNF52
Target/Specificity	This BRAP antibody is generated from rabbits immunized with a KLH conjugated synthetic peptide between 66-95 amino acids from the N-terminal region of human BRAP.
Dilution	WB~~1:1000 E~~Use at an assay dependent concentration.
Format	Purified polyclonal antibody supplied in PBS with 0.09% (W/V) sodium azide. This antibody is purified through a protein A column, followed by peptide affinity purification.
Storage	Maintain refrigerated at 2-8°C for up to 2 weeks. For long term storage store at -20°C in small aliquots to prevent freeze-thaw cycles.
Precautions	BRAP Antibody(N-term) is for research use only and not for use in diagnostic or therapeutic procedures.

Protein Information

Name	BRAP (HGNC:1099)
Synonyms	RNF52

Function	Negatively regulates MAP kinase activation by limiting the formation of Raf/MEK complexes probably by inactivation of the KSR1 scaffold protein. Also acts as a Ras responsive E3 ubiquitin ligase that, on activation of Ras, is modified by auto-polyubiquitination resulting in the release of inhibition of Raf/MEK complex formation. May also act as a cytoplasmic retention protein with a role in regulating nuclear transport.
Cellular Location	Cytoplasm.
Tissue Location	Expressed in breast epithelial cell lines.

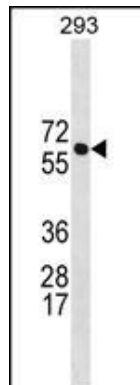
Background

The protein encoded by this gene was identified by its ability to bind to the nuclear localization signal of BRCA1 and other proteins. It is a cytoplasmic protein which may regulate nuclear targeting by retaining proteins with a nuclear localization signal in the cytoplasm.

References

Fulcher, A.J., et al. FASEB J. 24(5):1454-1466(2010)
Kamatani, Y., et al. Nat. Genet. 42(3):210-215(2010)
Ganesh, S.K., et al. Nat. Genet. 41(11):1191-1198(2009)
Hinohara, K., et al. J. Hum. Genet. 54(11):642-646(2009)
Cui, R., et al. Gastroenterology 137(5):1768-1775(2009)

Images



BRAP Antibody (N-term) (Cat. #AP19664a) western blot analysis in 293 cell line lysates (35ug/lane). This demonstrates the BRAP antibody detected the BRAP protein (arrow).

Please note: All products are 'FOR RESEARCH USE ONLY. NOT FOR USE IN DIAGNOSTIC OR THERAPEUTIC PROCEDURES'.