

HBZ Antibody(C-term)

Affinity Purified Rabbit Polyclonal Antibody (Pab)

Catalog # AP19610b

Product Information

Application	WB, E
Primary Accession	P02008
Other Accession	NP_005323.1
Reactivity	Human
Host	Rabbit
Clonality	Polyclonal
Isotype	Rabbit IgG
Clone Names	RB41010
Calculated MW	15637
Antigen Region	95-123

Additional Information

Gene ID	3050
Other Names	Hemoglobin subunit zeta, HBAZ, Hemoglobin zeta chain, Zeta-globin, HBZ, HBZ2
Target/Specificity	This HBZ antibody is generated from rabbits immunized with a KLH conjugated synthetic peptide between 95-123 amino acids from the C-terminal region of human HBZ.
Dilution	WB~~1:1000 E~~Use at an assay dependent concentration.
Format	Purified polyclonal antibody supplied in PBS with 0.09% (W/V) sodium azide. This antibody is purified through a protein A column, followed by peptide affinity purification.
Storage	Maintain refrigerated at 2-8°C for up to 2 weeks. For long term storage store at -20°C in small aliquots to prevent freeze-thaw cycles.
Precautions	HBZ Antibody(C-term) is for research use only and not for use in diagnostic or therapeutic procedures.

Protein Information

Name	HBZ
Synonyms	HBZ2
Function	The zeta chain is an alpha-type chain of mammalian embryonic

hemoglobin.

Tissue Location

Detected in fetal erythrocytes (at protein level).

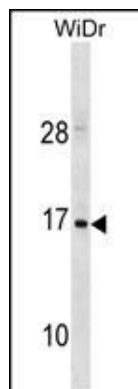
Background

Zeta-globin is an alpha-like hemoglobin. The zeta-globin polypeptide is synthesized in the yolk sac of the early embryo, while alpha-globin is produced throughout fetal and adult life. The zeta-globin gene is a member of the human alpha-globin gene cluster that includes five functional genes and two pseudogenes. The order of genes is: 5' - zeta - pseudozeta - mu - pseudoalpha-1 - alpha-2 - alpha-1 - theta1 - 3'.

References

Hivin, P., et al. J. Cell. Sci. 118 (PT 7), 1355-1362 (2005) :
He, Z., et al. Biochem. Biophys. Res. Commun. 325(4):1376-1382(2004)
Kidd, R.D., et al. Biochemistry 40(51):15669-15675(2001)
Lau, E.T., et al. Prenat. Diagn. 21(7):529-539(2001)
Daniels, R.J., et al. Hum. Mol. Genet. 10(4):339-352(2001)

Images



HBZ Antibody (C-term) (Cat. #AP19610b) western blot analysis in WiDr cell line lysates (35ug/lane). This demonstrates the HBZ antibody detected the HBZ protein (arrow).

Please note: All products are 'FOR RESEARCH USE ONLY. NOT FOR USE IN DIAGNOSTIC OR THERAPEUTIC PROCEDURES'.