

EIF4B Antibody (S422)

Affinity Purified Rabbit Polyclonal Antibody (Pab)

Catalog # AP1950d

Product Information

Application	WB, IHC-P, E
Primary Accession	P23588
Other Accession	Q8WYK5
Reactivity	Human
Host	Rabbit
Clonality	Polyclonal
Isotype	Rabbit IgG
Clone Names	RB13724
Calculated MW	69151
Antigen Region	400-429

Additional Information

Gene ID	1975
Other Names	Eukaryotic translation initiation factor 4B, eIF-4B, EIF4B
Target/Specificity	This EIF4B antibody is generated from rabbits immunized with a KLH conjugated synthetic peptide between 400-429 amino acids from human EIF4B.
Dilution	WB~~1:1000 IHC-P~~1:100~500 E~~Use at an assay dependent concentration.
Format	Purified polyclonal antibody supplied in PBS with 0.09% (W/V) sodium azide. This antibody is purified through a protein A column, followed by peptide affinity purification.
Storage	Maintain refrigerated at 2-8°C for up to 2 weeks. For long term storage store at -20°C in small aliquots to prevent freeze-thaw cycles.
Precautions	EIF4B Antibody (S422) is for research use only and not for use in diagnostic or therapeutic procedures.

Protein Information

Name	EIF4B
Function	Required for the binding of mRNA to ribosomes. Functions in close association with EIF4-F and EIF4-A. Binds near the 5'-terminal cap of mRNA in presence of EIF-4F and ATP. Promotes the ATPase activity and the ATP-dependent RNA unwinding activity of both EIF4-A and EIF4-F.

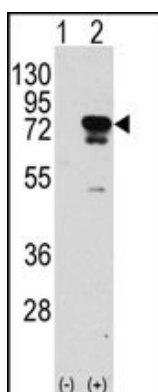
Background

EIF4B is required for the binding of mRNA to ribosomes. It functions in close association with EIF4-F and EIF4-A by binding near the 5'- terminal cap of mRNA in presence of EIF-4F and ATP. It also promotes the ATPase activity and the ATP-dependent RNA unwinding activity of both EIF4-A and EIF4-F

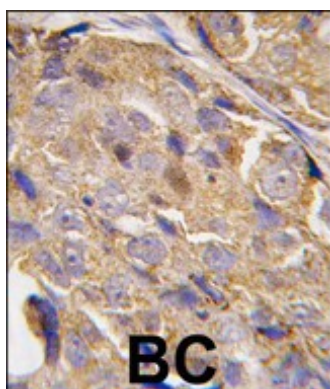
References

Doepker, R.C., et al., J. Virol. 78(9):4684-4699 (2004).
Fleming, K., et al., Biochemistry 42(30):8966-8975 (2003).
Milburn, S.C., et al., EMBO J. 9(9):2783-2790 (1990).

Images



Western blot analysis of EIF4B (arrow) using rabbit polyclonal EIF4B Antibody (S422) (RB13724). 293 cell lysates (2 ug/lane) either nontransfected (Lane 1) or transiently transfected with the EIF4B gene (Lane 2) (Origene Technologies).



Formalin-fixed and paraffin-embedded human breast carcinoma tissue reacted with EIF4B-S422, which was peroxidase-conjugated to the secondary antibody, followed by DAB staining. This data demonstrates the use of this antibody for immunohistochemistry; clinical relevance has not been evaluated.

Please note: All products are 'FOR RESEARCH USE ONLY. NOT FOR USE IN DIAGNOSTIC OR THERAPEUTIC PROCEDURES'.