

# PLAC1 Antibody (C-term)

Affinity Purified Rabbit Polyclonal Antibody (Pab)

Catalog # AP19318b

## Product Information

---

Application	WB, E
Primary Accession	<a href="#">Q9HBJ0</a>
Other Accession	<a href="#">NP_068568.1</a>
Reactivity	Human
Host	Rabbit
Clonality	Polyclonal
Isotype	Rabbit IgG
Clone Names	RB40197
Calculated MW	23616
Antigen Region	116-145

## Additional Information

---

Gene ID	10761
Other Names	Placenta-specific protein 1, PLAC1 {ECO:0000312   EMBL:AAG225961}
Target/Specificity	This PLAC1 antibody is generated from rabbits immunized with a KLH conjugated synthetic peptide between 116-145 amino acids from the C-terminal region of human PLAC1.
Dilution	WB~~1:1000 E~~Use at an assay dependent concentration.
Format	Purified polyclonal antibody supplied in PBS with 0.09% (W/V) sodium azide. This antibody is purified through a protein A column, followed by peptide affinity purification.
Storage	Maintain refrigerated at 2-8°C for up to 2 weeks. For long term storage store at -20°C in small aliquots to prevent freeze-thaw cycles.
Precautions	PLAC1 Antibody (C-term) is for research use only and not for use in diagnostic or therapeutic procedures.

## Protein Information

---

Name	PLAC1 {ECO:0000312   EMBL:AAG22596.1}
Function	May play a role in placental development.
Cellular Location	Secreted.

## Tissue Location

Expressed in placenta. Localizes primarily to differentiated syncytiotrophoblast throughout gestation as well as to a small population of villous cytotrophoblasts. Also detected in maternal blood and rapidly disappears following delivery, but is not detected in other adult or fetal tissues examined.

## Background

---

PLAC1 may play a role in placental development.

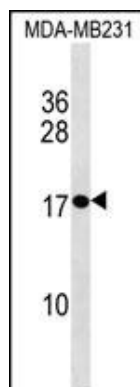
## References

---

Fant, M., et al. Prenat. Diagn. 30(6):497-502(2010)  
Koslowski, M., et al. J. Biol. Chem. 284(42):28607-28615(2009)  
Tchabo, N.E., et al. Cancer Immun. 9, 6 (2009) :  
Dong, X.Y., et al. Int. J. Cancer 122(9):2038-2043(2008)  
Silva, W.A. Jr., et al. Cancer Immun. 7, 18 (2007) :

## Images

---



PLAC1 Antibody (C-term)(Cat. #AP19318b) western blot analysis in MDA-MB231 cell line lysates (35ug/lane). This demonstrates the PLAC1 antibody detected the PLAC1 protein (arrow).

## Citations

---

- [Expression of placenta-specific 1 and its potential for eliciting anti-tumor helper T-cell responses in head and neck squamous cell carcinoma](#)

Please note: All products are 'FOR RESEARCH USE ONLY. NOT FOR USE IN DIAGNOSTIC OR THERAPEUTIC PROCEDURES'.