

SPINT2 Antibody (C-term)

Affinity Purified Rabbit Polyclonal Antibody (Pab)

Catalog # AP19268b

Product Information

Application	WB, E
Primary Accession	O43291
Other Accession	NP_066925.1
Reactivity	Human
Host	Rabbit
Clonality	Polyclonal
Isotype	Rabbit IgG
Clone Names	RB30605
Calculated MW	28228
Antigen Region	222-251

Additional Information

Gene ID	10653
Other Names	Kunitz-type protease inhibitor 2, Hepatocyte growth factor activator inhibitor type 2, HAI-2, Placental bikunin, SPINT2, HAI2, KOP
Target/Specificity	This SPINT2 antibody is generated from rabbits immunized with a KLH conjugated synthetic peptide between 222-251 amino acids from the C-terminal region of human SPINT2.
Dilution	WB~~1:1000 E~~Use at an assay dependent concentration.
Format	Purified polyclonal antibody supplied in PBS with 0.09% (W/V) sodium azide. This antibody is purified through a protein A column, followed by peptide affinity purification.
Storage	Maintain refrigerated at 2-8°C for up to 2 weeks. For long term storage store at -20°C in small aliquots to prevent freeze-thaw cycles.
Precautions	SPINT2 Antibody (C-term) is for research use only and not for use in diagnostic or therapeutic procedures.

Protein Information

Name	SPINT2
Synonyms	HAI2, KOP
Function	Inhibitor of HGFAC (PubMed: 9346890). Also inhibits plasmin, and plasma

and tissue kallikrein (PubMed:[9115294](#)). Inhibits serine protease activity of TMPRSS13 (PubMed:[20977675](#), PubMed:[28710277](#)). Inhibits serine protease activity of ST14/matriptase and PRSS8/prostasin in vitro (PubMed:[28710277](#), PubMed:[30445423](#)).

Cellular Location	Cell membrane; Single-pass type I membrane protein. Cytoplasm
Tissue Location	Expressed in placenta, kidney, pancreas, prostate, testis, thymus, and trachea.

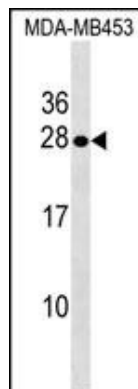
Background

This gene encodes a transmembrane protein with two extracellular Kunitz domains that inhibits a variety of serine proteases. The protein inhibits HGF activator which prevents the formation of active hepatocyte growth factor. This gene is a putative tumor suppressor, and mutations in this gene result in congenital sodium diarrhea. Multiple transcript variants encoding different isoforms have been found for this gene. [provided by RefSeq].

References

Dong, W., et al. Int. J. Cancer 127(7):1526-1534(2010)
Bergum, C., et al. Prostate 70(13):1422-1428(2010)
Sivagnanam, M., et al. Clin. Dysmorphol. 19 (1), 48 (2010) :
Yamauchi, M., et al. Biol. Chem. 383(12):1953-1957(2002)
Itoh, H., et al. Eur. J. Biochem. 267(11):3351-3359(2000)

Images



SPINT2 Antibody (C-term)(Cat. #AP19268b) western blot analysis in MDA-MB453 cell line lysates (35ug/lane). This demonstrates the SPINT2 antibody detected the SPINT2 protein (arrow).

Please note: All products are 'FOR RESEARCH USE ONLY. NOT FOR USE IN DIAGNOSTIC OR THERAPEUTIC PROCEDURES'.