

# NAP1L1 Antibody (N-term)

Purified Rabbit Polyclonal Antibody (Pab)

Catalog # AP1920b

## Product Information

---

<b>Application</b>	WB, E
<b>Primary Accession</b>	<a href="#">P55209</a>
<b>Other Accession</b>	<a href="#">Q9Z2G8</a> , <a href="#">P28656</a> , <a href="#">A6H767</a>
<b>Reactivity</b>	Human
<b>Predicted</b>	Bovine, Mouse, Rat
<b>Host</b>	Rabbit
<b>Clonality</b>	Polyclonal
<b>Isotype</b>	Rabbit IgG
<b>Calculated MW</b>	45374
<b>Antigen Region</b>	1-30

## Additional Information

---

<b>Gene ID</b>	4673
<b>Other Names</b>	Nucleosome assembly protein 1-like 1, NAP-1-related protein, hNRP, NAP1L1, NRP
<b>Target/Specificity</b>	This NAP1L1 antibody is generated from rabbits immunized with a KLH conjugated synthetic peptide between 1-30 amino acids from the N-terminal region of human NAP1L1.
<b>Dilution</b>	WB~~1:1000 E~~Use at an assay dependent concentration.
<b>Format</b>	Purified polyclonal antibody supplied in PBS with 0.09% (W/V) sodium azide. This antibody is prepared by Saturated Ammonium Sulfate (SAS) precipitation followed by dialysis against PBS.
<b>Storage</b>	Maintain refrigerated at 2-8°C for up to 2 weeks. For long term storage store at -20°C in small aliquots to prevent freeze-thaw cycles.
<b>Precautions</b>	NAP1L1 Antibody (N-term) is for research use only and not for use in diagnostic or therapeutic procedures.

## Protein Information

---

<b>Name</b>	NAP1L1
<b>Synonyms</b>	NRP
<b>Function</b>	Histone chaperone that plays a role in the nuclear import of H2A-H2B and

nucleosome assembly (PubMed:[20002496](#), PubMed:[21211722](#), PubMed:[26841755](#)). Also participates in several important DNA repair mechanisms: greatly enhances ERCC6-mediated chromatin remodeling which is essential for transcription-coupled nucleotide excision DNA repair (PubMed:[28369616](#)). Also stimulates homologous recombination (HR) by RAD51 and RAD54 which is essential in mitotic DNA double strand break (DSB) repair (PubMed:[24798879](#)). Plays a key role in the regulation of embryonic neurogenesis (By similarity). Promotes the proliferation of neural progenitors and inhibits neuronal differentiation during cortical development (By similarity). Regulates neurogenesis via the modulation of RASSF10; regulates RASSF10 expression by promoting SETD1A-mediated H3K4 methylation at the RASSF10 promoter (By similarity).

<b>Cellular Location</b>	Nucleus. Melanosome. Cytoplasm. Note=Identified by mass spectrometry in melanosome fractions from stage I to stage IV
<b>Tissue Location</b>	Ubiquitously expressed.

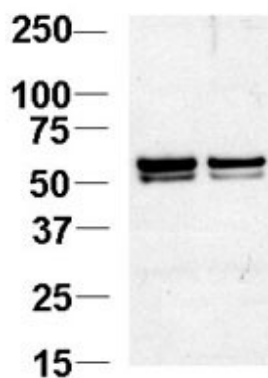
## Background

NAP1L1 is a member of the nucleosome assembly protein (NAP) family. This protein participates in DNA replication and may play a role in modulating chromatin formation and contribute to the regulation of cell proliferation.

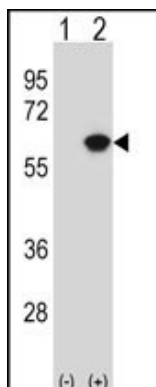
## References

Rehtanz, M., et al., Mol. Cell. Biol. 24(5):2153-2168 (2004).  
Simon, H.U., et al., Biochem. J. 297 (PT 2), 389-397 (1994) (): ().

## Images



Western blot analysis of NAP1L1 Antibody (N-term) (Cat.#AP1920b) in Jurkat cell lysates. NAP1L1 was detected using the purified Pab at 1:1000. Data courtesy of Guoqiang Xu, Cornell University.



Western blot analysis of NAP1L1 (arrow) using rabbit polyclonal NAP1L1 Antibody (Cat.#AP1920b). 293 cell lysates (2 ug/lane) either nontransfected (Lane 1) or transiently transfected (Lane 2) with the NAP1L1 gene.

## Citations

---

- [Using a Fluorescent PCR-capillary Gel Electrophoresis Technique to Genotype CRISPR/Cas9-mediated Knockout Mutants in a High-throughput Format.](#)
- [Global profiling of protease cleavage sites by chemoselective labeling of protein N-termini.](#)

Please note: All products are 'FOR RESEARCH USE ONLY. NOT FOR USE IN DIAGNOSTIC OR THERAPEUTIC PROCEDURES'.