

RHOXF2B Antibody (Center)

Affinity Purified Rabbit Polyclonal Antibody (Pab)

Catalog # AP19180c

Product Information

Application	IF, WB, E
Primary Accession	P0C7M4
Other Accession	Q9BQY4 , NP_001093155.1
Reactivity	Human
Host	Rabbit
Clonality	Polyclonal
Isotype	Rabbit IgG
Calculated MW	31637
Antigen Region	95-121

Additional Information

Gene ID	727940
Other Names	Rhox homeobox family member 2B, RHOXF2B
Target/Specificity	This RHOXF2B antibody is generated from rabbits immunized with a KLH conjugated synthetic peptide between 95-121 amino acids from the Central region of human RHOXF2B.
Dilution	IF~~1:10~50 WB~~1:1000 E~~Use at an assay dependent concentration.
Format	Purified polyclonal antibody supplied in PBS with 0.09% (W/V) sodium azide. This antibody is purified through a protein A column, followed by peptide affinity purification.
Storage	Maintain refrigerated at 2-8°C for up to 2 weeks. For long term storage store at -20°C in small aliquots to prevent freeze-thaw cycles.
Precautions	RHOXF2B Antibody (Center) is for research use only and not for use in diagnostic or therapeutic procedures.

Protein Information

Name	RHOXF2B (HGNC:33519)
Function	Transcription factor maybe involved in reproductive processes. Modulates expression of target genes encoding proteins involved in processes relevant to spermatogenesis.
Cellular Location	Nucleus {ECO:0000255 PROSITE-ProRule:PRU00108}.

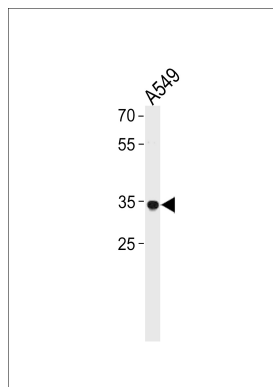
Tissue Location

Expressed in testis, mainly expressed in germ cells, but also detected in somatic cells such as Sertoli cells, Leydig cells and peritubular cells.

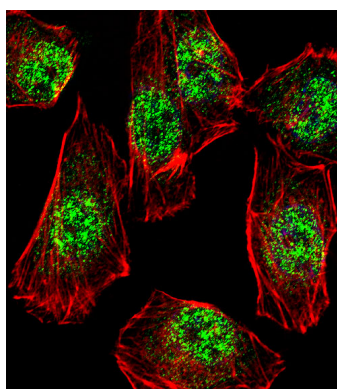
Background

The function of this protein remains unknown.

Images



RHOXF2B Antibody (Center) (Cat. #AP19180c) western blot analysis in A549 cell line lysates (35ug/lane). This demonstrates the RHOXF2B antibody detected the RHOXF2B protein (arrow).



Fluorescent confocal image of A549 cell stained with RHOXF2B Antibody (Center)(Cat#AP19180c). A549 cells were fixed with 4% PFA (20 min), permeabilized with Triton X-100 (0.1%, 10 min), then incubated with RHOXF2B primary antibody (1:25, 1 h at 37°C). For secondary antibody, Alexa Fluor® 488 conjugated donkey anti-rabbit antibody (green) was used (1:400, 50 min at 37°C). Cytoplasmic actin was counterstained with Alexa Fluor® 555 (red) conjugated Phalloidin (7 units/ml, 1 h at 37°C). Nuclei were counterstained with DAPI (blue) (10 µg/ml, 10 min). RHOXF2B immunoreactivity is localized to Nucleus significantly.

Please note: All products are 'FOR RESEARCH USE ONLY. NOT FOR USE IN DIAGNOSTIC OR THERAPEUTIC PROCEDURES'.