

GCHFR Antibody (C-term)

Affinity Purified Rabbit Polyclonal Antibody (Pab)
Catalog # AP18973b

Product Information

Application	WB, E
Primary Accession	P30047
Other Accession	Q32L41 , NP_005249.1
Reactivity	Human
Predicted	Bovine
Host	Rabbit
Clonality	Polyclonal
Isotype	Rabbit IgG
Clone Names	RB39199
Antigen Region	38-66

Additional Information

Other Names	GTP cyclohydrolase 1 feedback regulatory protein, GFRP, GTP cyclohydrolase I feedback regulatory protein, p35, GCHFR, GFRP
Target/Specificity	This GCHFR antibody is generated from rabbits immunized with a KLH conjugated synthetic peptide between 38-66 amino acids from the C-terminal region of human GCHFR.
Dilution	WB~~1:1000 E~~Use at an assay dependent concentration.
Format	Purified polyclonal antibody supplied in PBS with 0.09% (W/V) sodium azide. This antibody is purified through a protein A column, followed by peptide affinity purification.
Storage	Maintain refrigerated at 2-8°C for up to 2 weeks. For long term storage store at -20°C in small aliquots to prevent freeze-thaw cycles.
Precautions	GCHFR Antibody (C-term) is for research use only and not for use in diagnostic or therapeutic procedures.

Protein Information

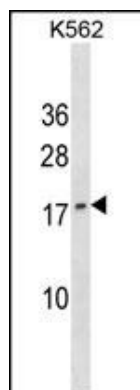
Background

GTP cyclohydrolase I feedback regulatory protein binds to and mediates tetrahydrobiopterin inhibition of GTP cyclohydrolase I. The regulatory protein, GCHFR, consists of a homodimer. It is postulated that GCHFR may play a role in regulating phenylalanine metabolism in the liver and in the production of biogenic amine neurotransmitters and nitric oxide.

References

Bailey, S.D., et al. *Diabetes Care* 33(10):2250-2253(2010) McHugh, P.C., et al. *Pharmacogenomics J.* (2010) In press : Li, L., et al. *Circ. Res.* 106(2):328-336(2010) Talmud, P.J., et al. *Am. J. Hum. Genet.* 85(5):628-642(2009) Schnetz-Boutaud, N.C., et al. *Genes Brain Behav.* 8(8):753-757(2009)

Images



GCHFR Antibody (C-term) (Cat. #AP18973b) western blot analysis in K562 cell line lysates (35ug/lane). This demonstrates the GCHFR antibody detected the GCHFR protein (arrow).

Please note: All products are 'FOR RESEARCH USE ONLY. NOT FOR USE IN DIAGNOSTIC OR THERAPEUTIC PROCEDURES'.