

# CXCL2 Antibody (C-term)

Affinity Purified Rabbit Polyclonal Antibody (Pab)

Catalog # AP18961b

## Product Information

---

<b>Application</b>	WB, E
<b>Primary Accession</b>	<a href="#">P19875</a>
<b>Other Accession</b>	<a href="#">NP_002080.1</a>
<b>Reactivity</b>	Human
<b>Host</b>	Rabbit
<b>Clonality</b>	Polyclonal
<b>Isotype</b>	Rabbit IgG
<b>Clone Names</b>	RB39106
<b>Calculated MW</b>	11389
<b>Antigen Region</b>	79-107

## Additional Information

---

<b>Gene ID</b>	2920
<b>Other Names</b>	C-X-C motif chemokine 2, Growth-regulated protein beta, Gro-beta, Macrophage inflammatory protein 2-alpha, MIP2-alpha, GRO-beta(5-73), GRO-beta-T, Hematopoietic synergistic factor, HSF, SB-251353, CXCL2, GRO2, GROB, MIP2A, SCYB2
<b>Target/Specificity</b>	This CXCL2 antibody is generated from rabbits immunized with a KLH conjugated synthetic peptide between 79-107 amino acids from the C-terminal region of human CXCL2.
<b>Dilution</b>	WB~~1:1000 E~~Use at an assay dependent concentration.
<b>Format</b>	Purified polyclonal antibody supplied in PBS with 0.05% (V/V) Proclin 300. This antibody is purified through a protein A column, followed by peptide affinity purification.
<b>Storage</b>	Maintain refrigerated at 2-8°C for up to 2 weeks. For long term storage store at -20°C in small aliquots to prevent freeze-thaw cycles.
<b>Precautions</b>	CXCL2 Antibody (C-term) is for research use only and not for use in diagnostic or therapeutic procedures.

## Protein Information

---

<b>Name</b>	CXCL2
<b>Synonyms</b>	GRO2, GROB, MIP2A, SCYB2

<b>Function</b>	Produced by activated monocytes and neutrophils and expressed at sites of inflammation. Hemateregulatory chemokine, which, in vitro, suppresses hematopoietic progenitor cell proliferation. GRO-beta(5-73) shows a highly enhanced hematopoietic activity.
<b>Cellular Location</b>	Secreted.

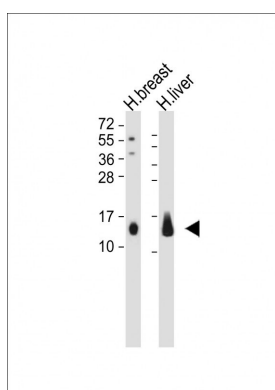
## Background

Produced by activated monocytes and neutrophils and expressed at sites of inflammation. Hemateregulatory chemokine, which, in vitro, suppresses hematopoietic progenitor cell proliferation. GRO-beta(5-73) shows a highly enhanced hematopoietic activity.

## References

Doll, D., et al. Int J Colorectal Dis 25(5):573-581(2010)  
 Nguyen-Jackson, H., et al. Blood 115(16):3354-3363(2010)  
 Davila, S., et al. Genes Immun. 11(3):232-238(2010)  
 Segat, L., et al. Vaccine 28(10):2201-2206(2010)  
 Wang, B., et al. Mol. Cancer Res. 7(5):755-764(2009)

## Images



All lanes : Anti-CXCL2 Antibody (C-term) at 1:1000-1:2000 dilution  
 Lane 1: Human breast whole tissue lysate  
 Lane 2: Human liver whole tissue lysate  
 Lysates/proteins at 20 µg per lane. Secondary Goat Anti-Rabbit IgG, (H+L), Peroxidase conjugated at 1:10000 dilution. Predicted band size : 11 kDa  
 Blocking/Dilution buffer: 5% NFDM/TBST.

Please note: All products are 'FOR RESEARCH USE ONLY. NOT FOR USE IN DIAGNOSTIC OR THERAPEUTIC PROCEDURES'.