

ANKRD56 Antibody (Center)

Affinity Purified Rabbit Polyclonal Antibody (Pab)

Catalog # AP18942c

Product Information

Application	WB, E
Primary Accession	A6NEL2
Other Accession	NP_001025041.1
Reactivity	Human
Host	Rabbit
Clonality	Polyclonal
Isotype	Rabbit IgG
Clone Names	RB38681
Calculated MW	85742
Antigen Region	412-438

Additional Information

Gene ID	345079
Other Names	Ankyrin repeat domain-containing protein SOWAHB, Ankyrin repeat domain-containing protein 56, Protein sosondowah homolog B, SOWAHB, ANKRD56
Target/Specificity	This ANKRD56 antibody is generated from rabbits immunized with a KLH conjugated synthetic peptide between 412-438 amino acids from the Central region of human ANKRD56.
Dilution	WB~~1:1000 E~~Use at an assay dependent concentration.
Format	Purified polyclonal antibody supplied in PBS with 0.09% (W/V) sodium azide. This antibody is purified through a protein A column, followed by peptide affinity purification.
Storage	Maintain refrigerated at 2-8°C for up to 2 weeks. For long term storage store at -20°C in small aliquots to prevent freeze-thaw cycles.
Precautions	ANKRD56 Antibody (Center) is for research use only and not for use in diagnostic or therapeutic procedures.

Protein Information

Name	SOWAHB
Synonyms	ANKRD56

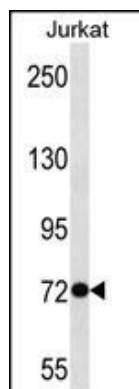
Background

The function of this protein remains unknown.

References

Strausberg, R.L., et al. Proc. Natl. Acad. Sci. U.S.A. 99(26):16899-16903(2002)

Images



ANKRD56 Antibody (Center) (Cat. #AP18942c) western blot analysis in Jurkat cell line lysates (35ug/lane). This demonstrates the ANKRD56 antibody detected the ANKRD56 protein (arrow).

Please note: All products are 'FOR RESEARCH USE ONLY. NOT FOR USE IN DIAGNOSTIC OR THERAPEUTIC PROCEDURES'.