

COL19A1 Antibody (N-term)

Affinity Purified Rabbit Polyclonal Antibody (Pab)

Catalog # AP18907a

Product Information

Application	WB, E
Primary Accession	Q14993
Other Accession	NP_001849.2
Reactivity	Human, Mouse
Host	Rabbit
Clonality	Polyclonal
Isotype	Rabbit IgG
Clone Names	RB40198
Calculated MW	115221
Antigen Region	175-204

Additional Information

Gene ID	1310
Other Names	Collagen alpha-1(XIX) chain, Collagen alpha-1(Y) chain, COL19A1
Target/Specificity	This COL19A1 antibody is generated from rabbits immunized with a KLH conjugated synthetic peptide between 175-204 amino acids from the N-terminal region of human COL19A1.
Dilution	WB~~1:1000 E~~Use at an assay dependent concentration.
Format	Purified polyclonal antibody supplied in PBS with 0.09% (W/V) sodium azide. This antibody is purified through a protein A column, followed by peptide affinity purification.
Storage	Maintain refrigerated at 2-8°C for up to 2 weeks. For long term storage store at -20°C in small aliquots to prevent freeze-thaw cycles.
Precautions	COL19A1 Antibody (N-term) is for research use only and not for use in diagnostic or therapeutic procedures.

Protein Information

Name	COL19A1
Function	May act as a cross-bridge between fibrils and other extracellular matrix molecules. Involved in skeletal myogenesis in the developing esophagus. May play a role in organization of the pericellular matrix or the sphinteric smooth muscle.

Cellular Location	Secreted, extracellular space, extracellular matrix
Tissue Location	Localized to vascular, neuronal, mesenchymal, and some epithelial basement membrane zones in umbilical cord

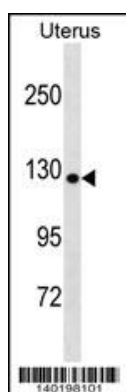
Background

This gene encodes the alpha chain of type XIX collagen, a member of the FACIT collagen family (fibril-associated collagens with interrupted helices). Although the function of this collagen is not known, other members of this collagen family are found in association with fibril-forming collagens such as type I and II, and serve to maintain the integrity of the extracellular matrix. The transcript produced from this gene has an unusually large 3' UTR which has not been completely sequenced.

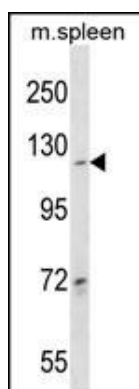
References

Rose, J.E., et al. Mol. Med. 16 (7-8), 247-253 (2010) : Barber, M.J., et al. PLoS ONE 5 (3), E9763 (2010) : Boudko, S.P., et al. J. Biol. Chem. 283(49):34345-34351(2008) Kapyla, J., et al. J. Biol. Chem. 279(49):51677-51687(2004) Mungall, A.J., et al. Nature 425(6960):805-811(2003)

Images



COL19A1 Antibody (N-term)(Cat. #AP18907a) western blot analysis in Uterus tissue lysates (35ug/lane). This demonstrates the COL19A1 antibody detected the COL19A1 protein (arrow).



COL19A1 Antibody (N-term) (Cat. #AP18907a) western blot analysis in mouse spleen tissue lysates (35ug/lane). This demonstrates the COL19A1 antibody detected the COL19A1 protein (arrow).

Please note: All products are 'FOR RESEARCH USE ONLY. NOT FOR USE IN DIAGNOSTIC OR THERAPEUTIC PROCEDURES'.