

PCGF6 Antibody (Center)

Affinity Purified Rabbit Polyclonal Antibody (Pab)

Catalog # AP18850c

Product Information

Application	WB, E
Primary Accession	Q9BYE7
Other Accession	Q5XI70 , Q99NA9 , NP_001011663.1
Reactivity	Human, Rat, Mouse
Predicted	Mouse, Rat
Host	Rabbit
Clonality	Polyclonal
Isotype	Rabbit IgG
Calculated MW	39047
Antigen Region	190-217

Additional Information

Gene ID	84108
Other Names	Polycomb group RING finger protein 6, Mel18 and Bmi1-like RING finger, RING finger protein 134, PCGF6, MBLR, RNF134
Target/Specificity	This PCGF6 antibody is generated from rabbits immunized with a KLH conjugated synthetic peptide between 190-217 amino acids from the Central region of human PCGF6.
Dilution	WB~~1:1000 E~~Use at an assay dependent concentration.
Format	Purified polyclonal antibody supplied in PBS with 0.09% (W/V) sodium azide. This antibody is purified through a protein A column, followed by peptide affinity purification.
Storage	Maintain refrigerated at 2-8°C for up to 2 weeks. For long term storage store at -20°C in small aliquots to prevent freeze-thaw cycles.
Precautions	PCGF6 Antibody (Center) is for research use only and not for use in diagnostic or therapeutic procedures.

Protein Information

Name	PCGF6
Synonyms	MBLR, RNF134
Function	Transcriptional repressor (PubMed: 12167161). May modulate the levels of

histone H3K4Me3 by activating KDM5D histone demethylase (PubMed:[17320162](#)). Component of a Polycomb group (PcG) multiprotein PRC1-like complex, a complex class required to maintain the transcriptionally repressive state of many genes, including Hox genes, throughout development. PcG PRC1 complex acts via chromatin remodeling and modification of histones; it mediates monoubiquitination of histone H2A 'Lys-119', rendering chromatin heritably changed in its expressibility (PubMed:[12167161](#)). Within the PRC1-like complex, regulates RNF2 ubiquitin ligase activity (PubMed:[26151332](#)).

Cellular Location	Nucleus
Tissue Location	Ubiquitous.

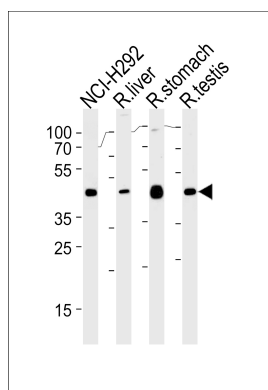
Background

The protein encoded by this gene contains a RING finger motif, which is most closely related to those of polycomb group (PcG) proteins RNF110/MEL-18 and BMI1. PcG proteins are known to form protein complexes and function as transcription repressors. This protein has been shown to interact with some PcG proteins and act as a transcription repressor. The activity of this protein is found to be regulated by cell cycle dependent phosphorylation. Alternatively spliced transcript variants encoding different isoforms have been identified.

References

Lee, J.Y., et al. Cancer Res. 68(11):4201-4209(2008)
Zhang, J., et al. J. Biol. Chem. 283(12):7464-7469(2008)
Lee, M.G., et al. Cell 128(5):877-887(2007)
Zhong, N., et al. Biochem. Biophys. Res. Commun. 338(2):855-861(2005)
Deloukas, P., et al. Nature 429(6990):375-381(2004)

Images



PCGF6 Antibody (Center) (Cat. #AP18850c) western blot analysis in NCI-H292, rat liver, stomach and testis cell line lysates (35ug/lane). This demonstrates the PCGF6 antibody detected the PCGF6 protein (arrow).

Please note: All products are 'FOR RESEARCH USE ONLY. NOT FOR USE IN DIAGNOSTIC OR THERAPEUTIC PROCEDURES'.