

# HSF2 Antibody (Center)

Affinity Purified Rabbit Polyclonal Antibody (Pab)

Catalog # AP18804c

## Product Information

---

<b>Application</b>	WB, E
<b>Primary Accession</b>	<a href="#">Q03933</a>
<b>Other Accession</b>	<a href="#">NP_004497.1</a>
<b>Reactivity</b>	Human, Mouse
<b>Host</b>	Rabbit
<b>Clonality</b>	Polyclonal
<b>Isotype</b>	Rabbit IgG
<b>Calculated MW</b>	60348
<b>Antigen Region</b>	216-245

## Additional Information

---

<b>Gene ID</b>	3298
<b>Other Names</b>	Heat shock factor protein 2, HSF 2, Heat shock transcription factor 2, HSTF 2, HSF2, HSTF2
<b>Target/Specificity</b>	This HSF2 antibody is generated from rabbits immunized with a KLH conjugated synthetic peptide between 216-245 amino acids from the Central region of human HSF2.
<b>Dilution</b>	WB~~1:1000 E~~Use at an assay dependent concentration.
<b>Format</b>	Purified polyclonal antibody supplied in PBS with 0.09% (W/V) sodium azide. This antibody is purified through a protein A column, followed by peptide affinity purification.
<b>Storage</b>	Maintain refrigerated at 2-8°C for up to 2 weeks. For long term storage store at -20°C in small aliquots to prevent freeze-thaw cycles.
<b>Precautions</b>	HSF2 Antibody (Center) is for research use only and not for use in diagnostic or therapeutic procedures.

## Protein Information

---

<b>Name</b>	HSF2
<b>Synonyms</b>	HSTF2
<b>Function</b>	DNA-binding protein that specifically binds heat shock promoter elements (HSE) and activates transcription. In higher eukaryotes, HSF is unable to bind

to the HSE unless the cells are heat shocked.

#### Cellular Location

Cytoplasm. Nucleus. Note=Cytoplasmic during normal growth and moves to the nucleus upon activation

## Background

---

HSF2, as well as the related gene HSF1, encodes a protein that binds specifically to the heat-shock element and has homology to HSFs of other species. Heat shock transcription factors activate heat-shock response genes under conditions of heat or other stresses. Although the names HSF1 and HSF2 were chosen for historical reasons, these peptides should be referred to as heat-shock transcription factors.

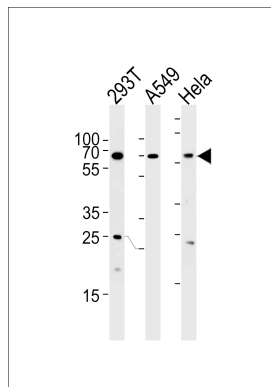
## References

---

Rose, J.E., et al. Mol. Med. 16 (7-8), 247-253 (2010) :  
Xing, H., et al. Cell Stress Chaperones 15(3):301-308(2010)  
Sandqvist, A., et al. Mol. Biol. Cell 20(5):1340-1347(2009)  
Tateishi, Y., et al. J. Biol. Chem. 284(4):2435-2447(2009)  
Vieira, A.R., et al. Genet. Med. 10(9):668-674(2008)

## Images

---



HSF2 Antibody (Center) (Cat. #AP18804c) western blot analysis in 293T,A549,HeLa cell line lysates (35ug/lane).This demonstrates the HSF2 antibody detected the HSF2 protein (arrow).

Please note: All products are 'FOR RESEARCH USE ONLY. NOT FOR USE IN DIAGNOSTIC OR THERAPEUTIC PROCEDURES'.