

IFI44L Antibody (C-term)

Affinity Purified Rabbit Polyclonal Antibody (Pab)

Catalog # AP18801b

Product Information

| | |
|-------------------|-----------------------------|
| Application | WB, E |
| Primary Accession | Q53G44 |
| Other Accession | NP_006811.2 |
| Reactivity | Human |
| Host | Rabbit |
| Clonality | Polyclonal |
| Isotype | Rabbit IgG |
| Clone Names | RB39319 |
| Calculated MW | 51322 |
| Antigen Region | 151-180 |

Additional Information

| | |
|--------------------|---|
| Gene ID | 10964 |
| Other Names | Interferon-induced protein 44-like, IFI44L, C1orf29 |
| Target/Specificity | This IFI44L antibody is generated from rabbits immunized with a KLH conjugated synthetic peptide between 151-180 amino acids from the C-terminal region of human IFI44L. |
| Dilution | WB~~1:1000 E~~Use at an assay dependent concentration. |
| Format | Purified polyclonal antibody supplied in PBS with 0.05% (V/V) Proclin 300. This antibody is purified through a protein A column, followed by peptide affinity purification. |
| Storage | Maintain refrigerated at 2-8°C for up to 2 weeks. For long term storage store at -20°C in small aliquots to prevent freeze-thaw cycles. |
| Precautions | IFI44L Antibody (C-term) is for research use only and not for use in diagnostic or therapeutic procedures. |

Protein Information

| | |
|----------|---|
| Name | IFI44L |
| Synonyms | C1orf29 |
| Function | Type I interferon-stimulated gene (ISG) that plays a critical role in antiviral and antibacterial activity (PubMed: 34722780). During bacterial infection, |

promotes macrophage differentiation and facilitates inflammatory cytokine secretion (PubMed:[34722780](#)). Plays a role in the control of respiratory syncytial virus/RSV infection, reducing the ability of the virus to replicate (PubMed:[32611756](#)). Exhibits a low antiviral activity against hepatitis C virus (PubMed:[21478870](#)). Also acts as a feedback regulator of IFN responses by negatively regulating IKBKB and IKBKE kinase activities through interaction with FKBP5 (PubMed:[31434731](#)).

Cellular Location Cytoplasm.

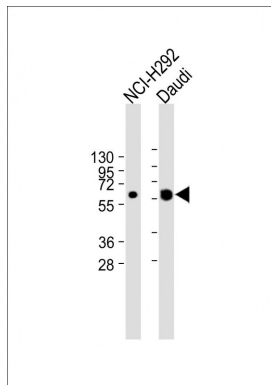
Background

The function of this protein remains unknown.

References

Davila, S., et al. Genes Immun. 11(3):232-238(2010)

Images



All lanes : Anti-IFI44L Antibody (C-term) at 1:2000 dilution
Lane 1: NCI-H292 whole cell lysate Lane 2: Daudi whole cell lysate
Lysates/proteins at 20 µg per lane. Secondary Goat Anti-Rabbit IgG, (H+L), Peroxidase conjugated at 1/10000 dilution. Predicted band size : 51 kDa
Blocking/Dilution buffer: 5% NFDM/TBST.

Please note: All products are 'FOR RESEARCH USE ONLY. NOT FOR USE IN DIAGNOSTIC OR THERAPEUTIC PROCEDURES'.