

KLRF2 Antibody (N-term)

Affinity Purified Rabbit Polyclonal Antibody (Pab)
Catalog # AP18787a

Product Information

Application	WB, E
Primary Accession	D3W0D1
Other Accession	NP_001177694.1
Reactivity	Human
Host	Rabbit
Clonality	Polyclonal
Isotype	Rabbit IgG
Clone Names	RB38872
Calculated MW	24008
Antigen Region	4-30

Additional Information

Gene ID	100431172
Other Names	Killer cell lectin-like receptor subfamily F member 2, Lectin-like receptor F2, Activating coreceptor NKp65, KLRF2
Target/Specificity	This KLRF2 antibody is generated from rabbits immunized with a KLH conjugated synthetic peptide between 4-30 amino acids from the N-terminal region of human KLRF2.
Dilution	WB~~1:1000 E~~Use at an assay dependent concentration.
Format	Purified polyclonal antibody supplied in PBS with 0.09% (W/V) sodium azide. This antibody is purified through a protein A column, followed by peptide affinity purification.
Storage	Maintain refrigerated at 2-8°C for up to 2 weeks. For long term storage store at -20°C in small aliquots to prevent freeze-thaw cycles.
Precautions	KLRF2 Antibody (N-term) is for research use only and not for use in diagnostic or therapeutic procedures.

Protein Information

Name	KLRF2
Function	C-type lectin-like receptor involved in natural killer cell mediated cytotoxicity and cytokine secretion in keratinocytes via its interaction with CLEC2A (PubMed: 20194751 , PubMed: 25510854). Triggers degranulation in a

SYK-dependent manner and stimulates SYK phosphotyrosinylation without recruiting SYK directly (PubMed:[28082678](#)).

Cellular Location

Cell membrane; Single-pass type II membrane protein

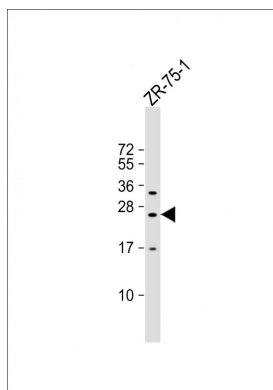
Background

The function of this protein remains unknown.

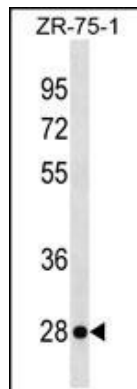
References

Spreu, J., et al. Proc. Natl. Acad. Sci. U.S.A. 107(11):5100-5105(2010)

Images



Anti-KLRF2 Antibody (N-term) at 1:1000 dilution + ZR-75-1 whole cell lysate Lysates/proteins at 20 µg per lane. Secondary Goat Anti-Rabbit IgG, (H+L), Peroxidase conjugated at 1/10000 dilution. Predicted band size : 24 kDa Blocking/Dilution buffer: 5% NFDM/TBST.



KLRF2 Antibody (N-term)(Cat. #AP18787a) western blot analysis in ZR-75-1 cell line lysates (35ug/lane). This demonstrates the KLRF2 antibody detected the KLRF2 protein (arrow).

Please note: All products are 'FOR RESEARCH USE ONLY. NOT FOR USE IN DIAGNOSTIC OR THERAPEUTIC PROCEDURES'.