

# CLEC6A Antibody (C-term)

Affinity Purified Rabbit Polyclonal Antibody (Pab)

Catalog # AP18742b

## Product Information

---

<b>Application</b>	WB, E
<b>Primary Accession</b>	<a href="#">Q6EIG7</a>
<b>Other Accession</b>	<a href="#">NP_001007034.1</a>
<b>Reactivity</b>	Human
<b>Host</b>	Rabbit
<b>Clonality</b>	Polyclonal
<b>Isotype</b>	Rabbit IgG
<b>Clone Names</b>	RB37390
<b>Calculated MW</b>	23998
<b>Antigen Region</b>	137-163

## Additional Information

---

<b>Gene ID</b>	93978
<b>Other Names</b>	C-type lectin domain family 6 member A, C-type lectin superfamily member 10, Dendritic cell-associated C-type lectin 2, DC-associated C-type lectin 2, Dectin-2, CLEC6A, CLECSF10, DECTIN2
<b>Target/Specificity</b>	This CLEC6A antibody is generated from rabbits immunized with a KLH conjugated synthetic peptide between 137-163 amino acids from the C-terminal region of human CLEC6A.
<b>Dilution</b>	WB~~1:1000 E~~Use at an assay dependent concentration.
<b>Format</b>	Purified polyclonal antibody supplied in PBS with 0.09% (W/V) sodium azide. This antibody is purified through a protein A column, followed by peptide affinity purification.
<b>Storage</b>	Maintain refrigerated at 2-8°C for up to 2 weeks. For long term storage store at -20°C in small aliquots to prevent freeze-thaw cycles.
<b>Precautions</b>	CLEC6A Antibody (C-term) is for research use only and not for use in diagnostic or therapeutic procedures.

## Protein Information

---

<b>Name</b>	CLEC6A ( <a href="#">HGNC:14556</a> )
<b>Function</b>	Calcium-dependent lectin that acts as a pattern recognition receptor (PRR) of the innate immune system: specifically recognizes and binds

alpha-mannans on *C.albicans* hyphae (PubMed:[23911656](#), PubMed:[28652405](#)). Binding of *C.albicans* alpha-mannans to this receptor complex leads to phosphorylation of the immunoreceptor tyrosine-based activation motif (ITAM) of FCER1G, triggering activation of SYK, CARD9 and NF-kappa-B, consequently driving maturation of antigen-presenting cells and shaping antigen-specific priming of T-cells toward effector T-helper 1 and T-helper 17 cell subtypes (By similarity). Recognizes also, in a mannose-dependent manner, allergens from house dust mite and fungi, by promoting cysteinyl leukotriene production (By similarity). Recognizes soluble elements from the eggs of *Shistosoma mansoni* altering adaptive immune responses (By similarity).

**Cellular Location**

Cell membrane; Single-pass type II membrane protein

**Tissue Location**

Expressed in lung, spleen, lymph node, leukocytes, bone marrow, tonsils and dendritic cells. Strongly expressed in purified monocytes and weakly in B-cells. In peripheral blood cells, preferentially expressed in plasmacytoids rather than myeloids

## Background

---

Like dectin-1 (CLEC7A; MIM 606264), CLEC6A, or dectin-2, is a type II membrane receptor with an extracellular C-type lectin-like domain fold. However, unlike dectin-1, dectin-2 lacks an immunoreceptor tyrosine-based activation motif (ITAM) in its cytoplasmic domain (Kanazawa et al., 2004 [PubMed 15175046]).

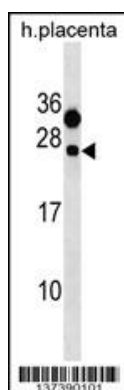
## References

---

- Gavino, A.C., et al. Exp. Dermatol. 14(4):281-288(2005)  
Flornes, L.M., et al. Immunogenetics 56(7):506-517(2004)  
Kanazawa, N., et al. J. Invest. Dermatol. 122(6):1522-1524(2004)

## Images

---



CLEC6A Antibody (C-term)(Cat. #AP18742b) western blot analysis in human placenta tissue lysates (35ug/lane). This demonstrates the CLEC6A antibody detected the CLEC6A protein (arrow).

Please note: All products are 'FOR RESEARCH USE ONLY. NOT FOR USE IN DIAGNOSTIC OR THERAPEUTIC PROCEDURES'.